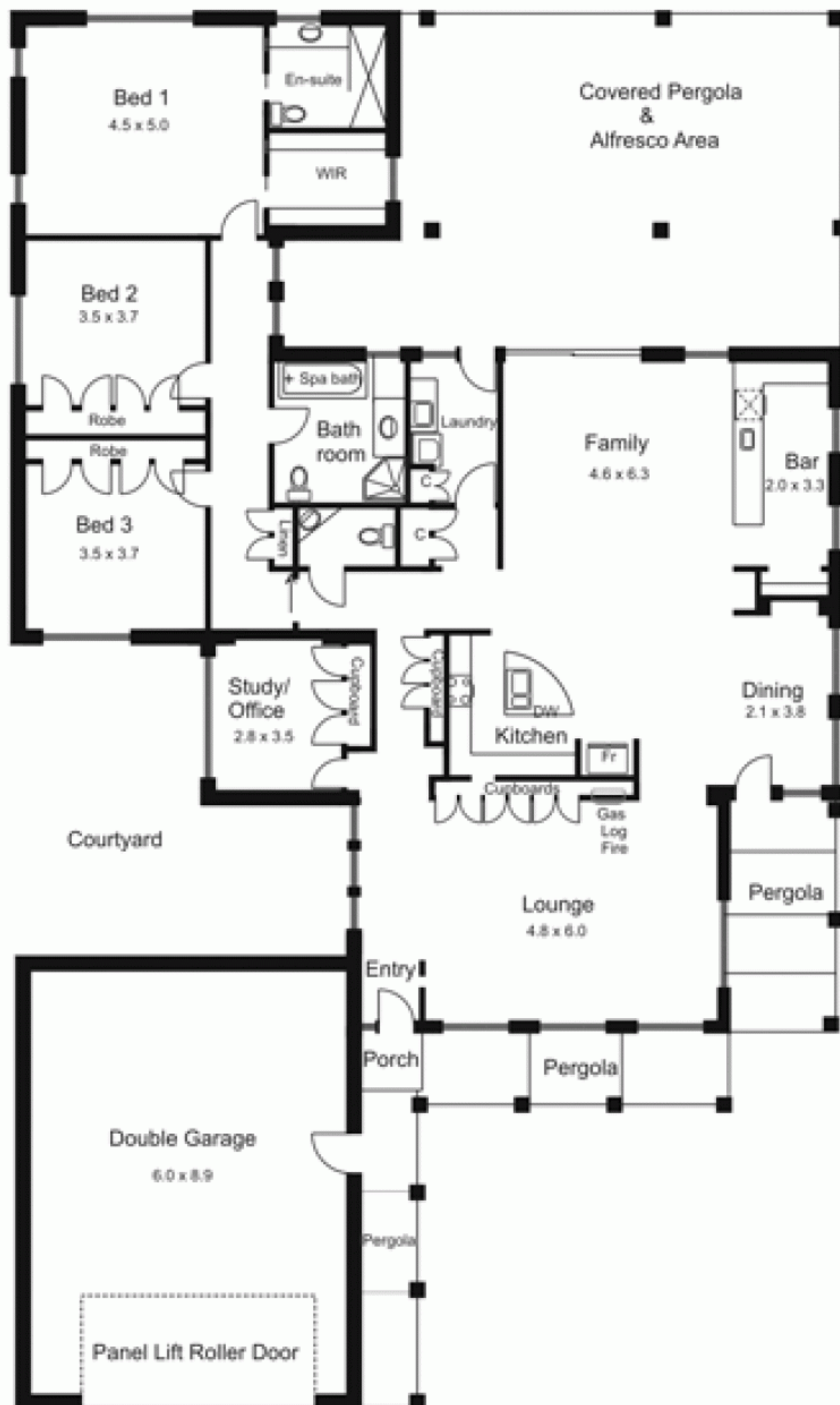


**8 Dalray Crescent NEW GISBORNE VIC**

4 2 2

Prestige home full of natural light and views to Macedon Ranges. Formal and family living areas sparkling with quality and style. Four bedrooms, 2 bathrooms (main with spa bath). Timber kitchen with granite bench tops. Vaulted ceilings and full length double hung windows. Impressive outside living/entertaining areas. Natural gas log fire, slab heating, air conditioning, double garage/workshop - remote controlled door.

**Building Size** : 27 sqm  
**Land Size** : 1600 sqm  
**View** : <https://www.kennedyandhunt.com.au/sale/vic/macedon-ranges/new-gisborne/residential/house/5848479>



Drawing is for illustration purposes only. All measurements are approximate only. Not drawn to scale.