


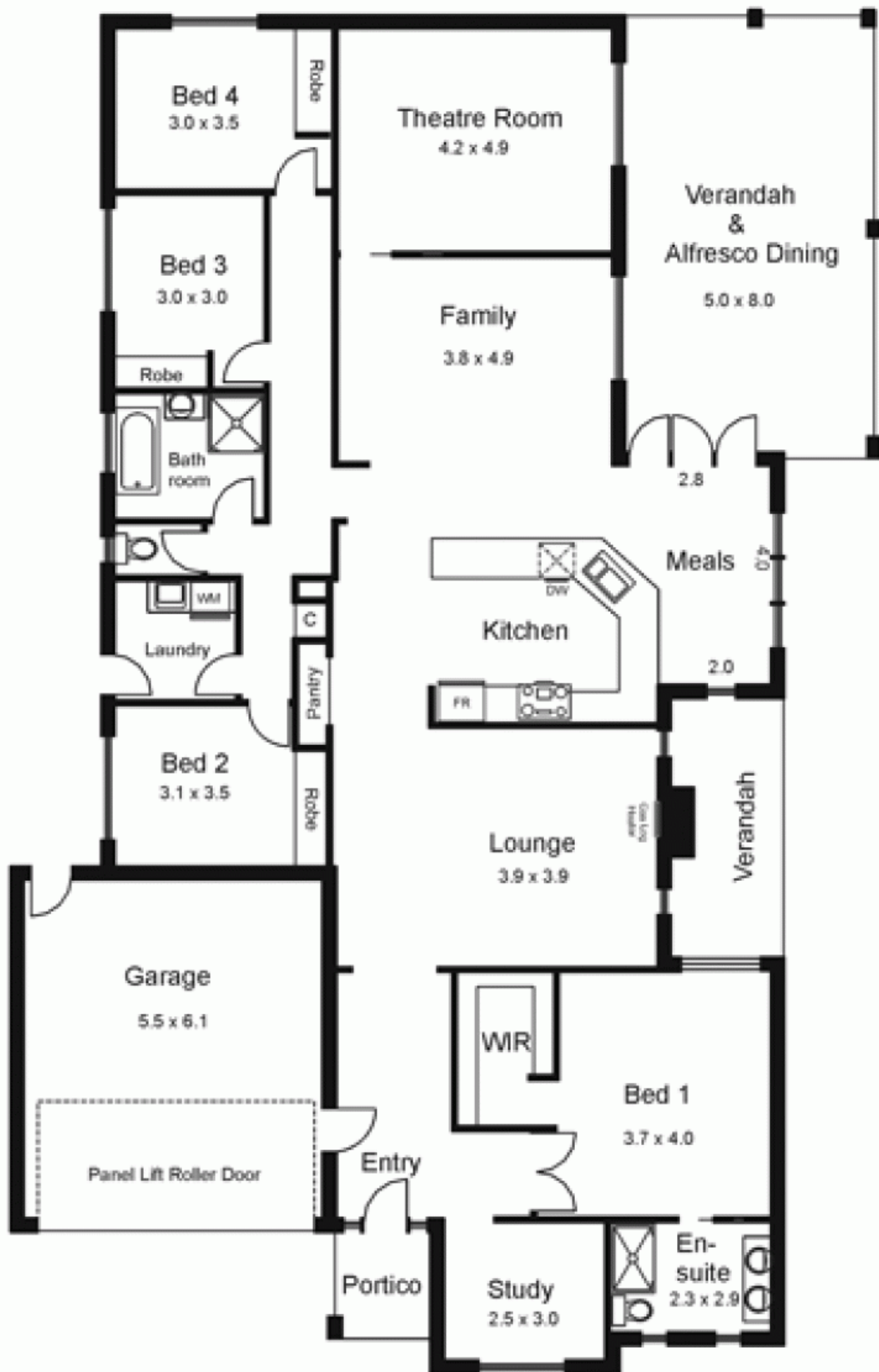




11 Francis Crescent GISBORNE VIC

4  2  2 

Building Size : 24 sqm
Land Size : 855 sqm
View : <https://www.kennedyandhunt.com.au/sale/vic/macedon-ranges/gisborne/residential/house/5848524>



Drawing is for illustration purposes only. Not drawn to scale.
 ALL MEASUREMENTS ARE APPROXIMATE ONLY.