

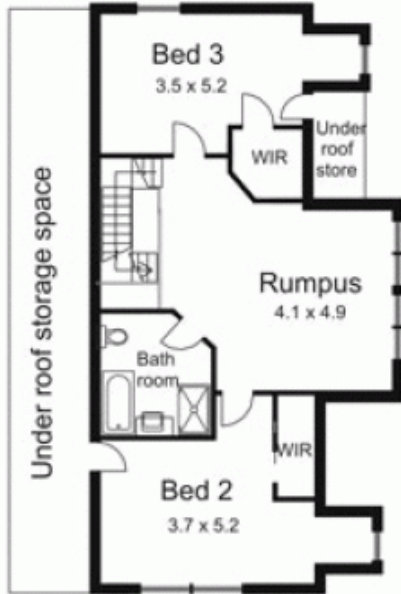


10 Morilla Court GISBORNE VIC

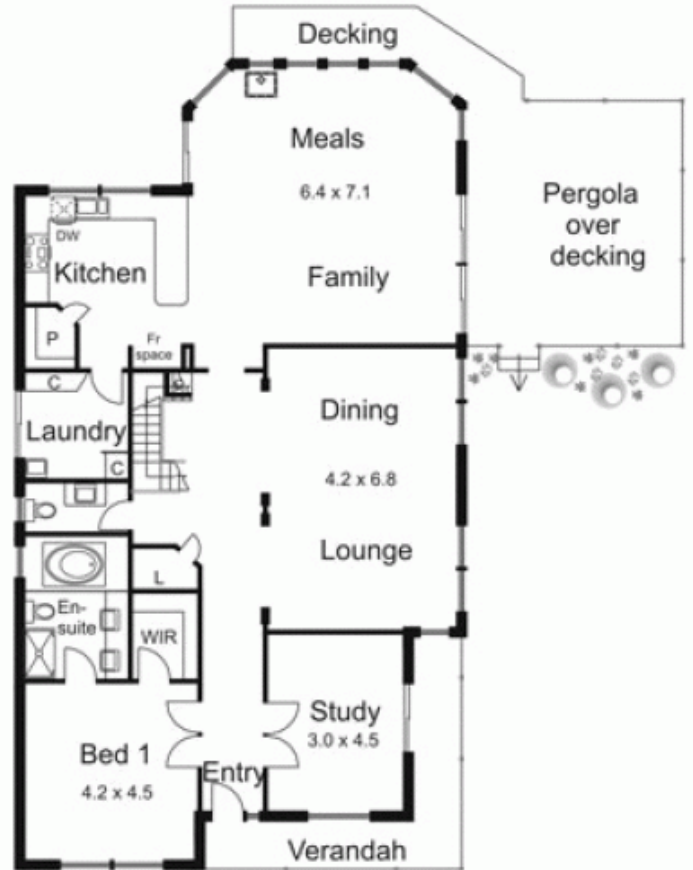
3 3

Modern double storey residence enjoys one of the best views in Gisborne. Easy living floor plan will suit the busiest of families. Downstairs accommodation comprises master bedroom, study, formal lounge/dining, kitchen/meals/living and powder room. Upstairs comprises two spacious bedrooms, bathroom and rumpus area. Features include polished floorboards, spa bath, central heating, cooling, stainless appliances, granite bench tops and a wonderful balcony to enjoy that fantastic view. Time to move up in the world!

Building Size : 285 sqm
Land Size : 2270 sqm
View : <https://www.kennedyandhunt.com.au/sale/vic/macedon-ranges/gisborne/residential/house/5848542>



UPPER LEVEL



GROUND FLOOR

Drawing is for illustration purposes only. Not drawn to scale. All measurements are approximate only