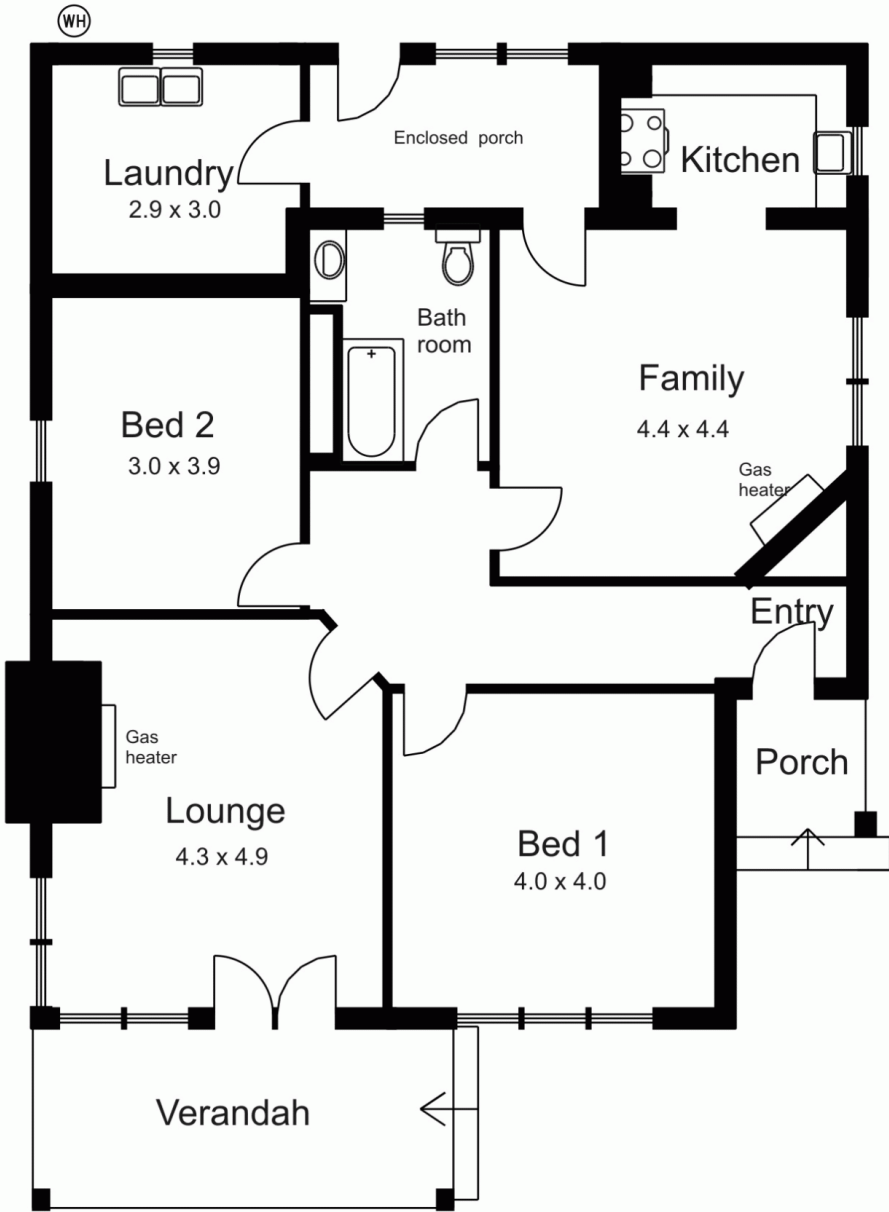
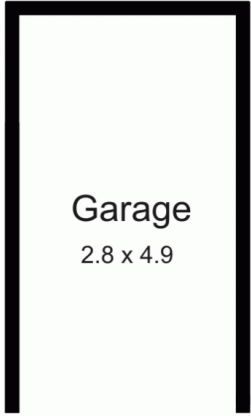


**52 Goode Street GISBORNE VIC**

2  1  1 

High position in popular leafy location only a short walk to town centre. Excellent opportunity to further develop as character residence or town house site (S.T.C.A.) Comprises 4 main rooms, fireplaces and high feature ceilings. Long term established gardens. Inspect this lucrative opportunity.

**Building Size** : 15 sqm  
**Land Size** : 1163 sqm  
**View** : <https://www.kennedyandhunt.com.au/sale/vic/macedon-ranges/gisborne/residential/house/5848545>



Drawing is for illustration purposes only. Not drawn to scale. All measurements are approximate only.