

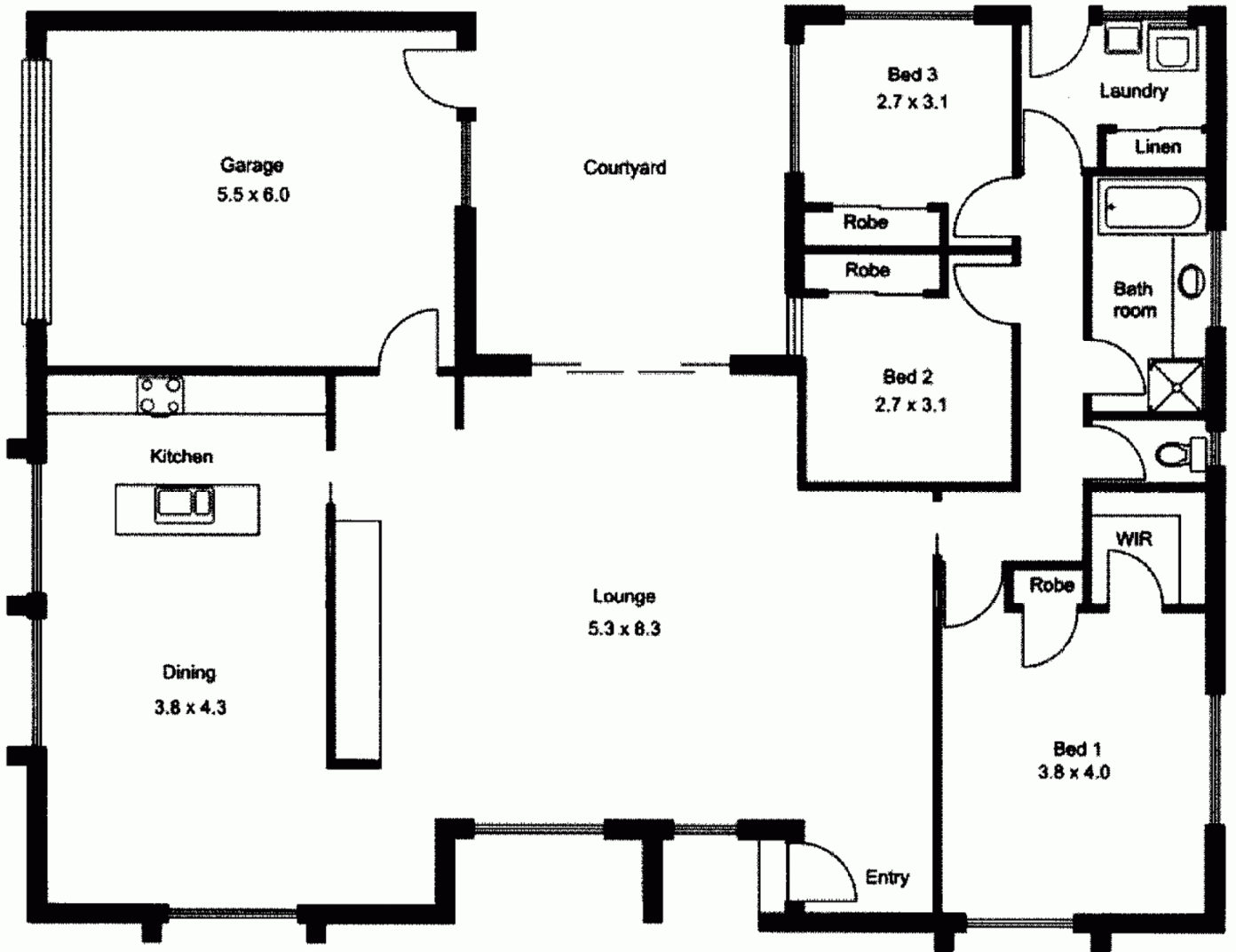


## 2 Hilltop Way GISBORNE VIC

3  1  2 

Light and bright with a floor plan allowing lots of winter sunshine into the two spacious living areas. Three bedrooms and family bathroom. Integrated double garage and rear courtyard. Electric appliances and split system heating/cooling. Simple living at its very best only minutes from township.

**Building Size** : 17 sqm  
**Land Size** : 691 sqm  
**View** : <https://www.kennedyandhunt.com.au/sale/vic/macedon-ranges/gisborne/residential/house/5848567>



All measurements are approximate only. Not drawn to scale.