



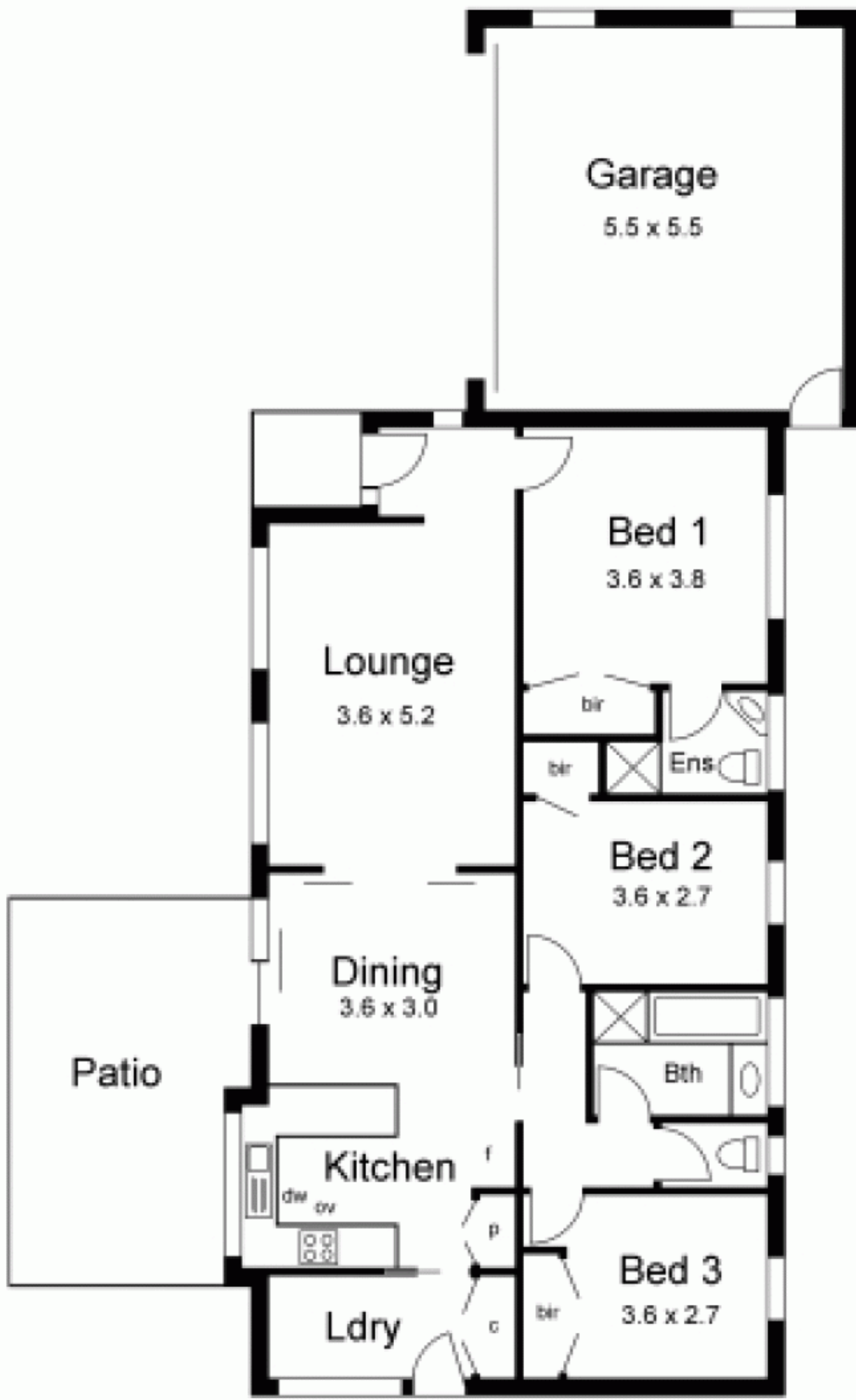
**12 Sunnypark Close GISBORNE VIC**

3 1 2

Light bright home offers three bedrooms, Ensuite, lounge, kitchen/meals/living. Features include double integrated garage with remote controlled door, split system, gas heating and pergola. Perfect opportunity to enter the housing market or add to your portfolio!

Currently leased until the 1st November 2010 @ \$1300 PCM.

**Building Size** : 12 sqm  
**Land Size** : 663 sqm  
**View** : <https://www.kennedyandhunt.com.au/sale/vic/macedon-ranges/gisborne/residential/house/5848569>



All measurements are approximate