

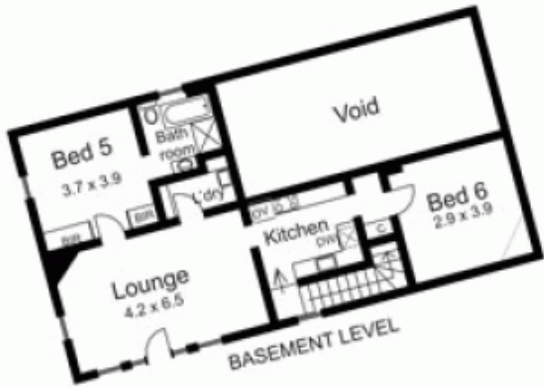


8 Charles Court GISBORNE VIC

4 2 2

Clever craftsmanship and masonry, period features and detail all combine to create a stately 4 bedroom + study home with spacious and gracious accommodation for the largest family. Separate fully self contained 2 bedroom apartment provides fabulous space for guests/extended family or even a B & B venture. The grounds offer tennis court, paved gazebo/barbeque courtyard, outdoor spa, extensive garaging/shedding, carport, mature gardens with stone edging and walls. Character and charm within easy distance to town and facilities.

Building Size : 50 sqm
Land Size : 4000 sqm
View : <https://www.kennedyandhunt.com.au/sale/vic/macedon-ranges/gisborne/residential/house/5848570>



LEGEND.....
 BR... Built in robe
 BC... Built in cupboard
 DW... dishwasher
 CH... combustion heater
 OV... oven
 WO... Walk in robe
 WP... walk in pantry

Drawing is for illustration purposes only. Not drawn to scale. All measurements are approximate only.