

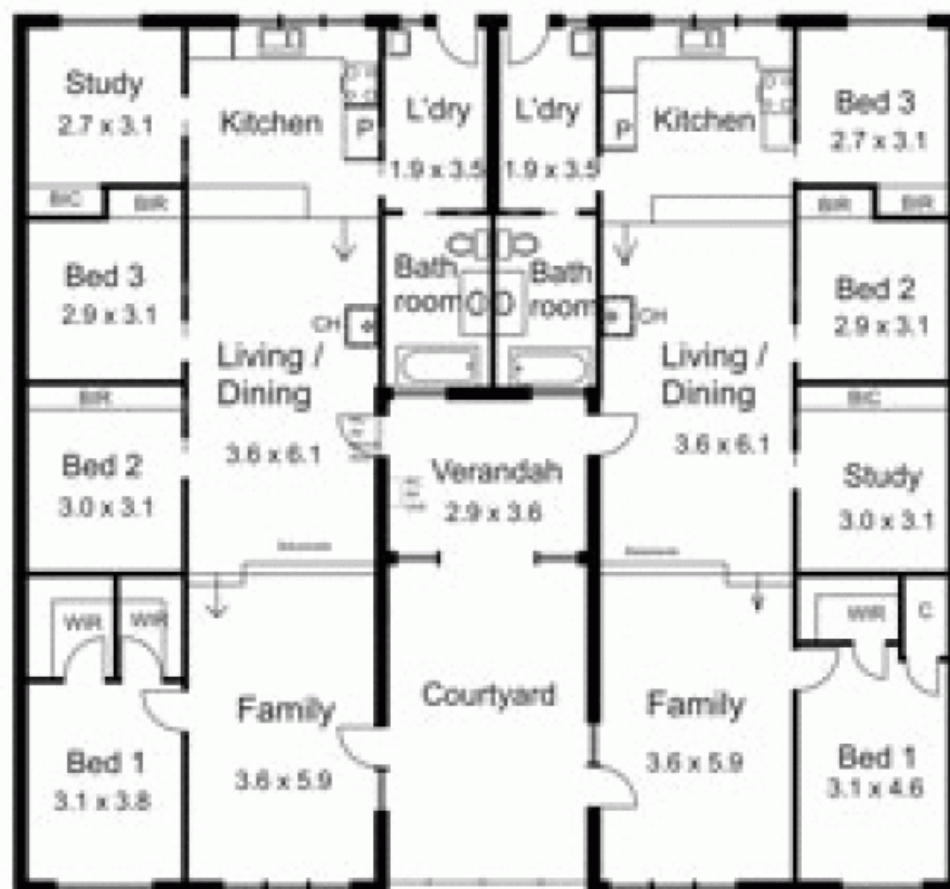
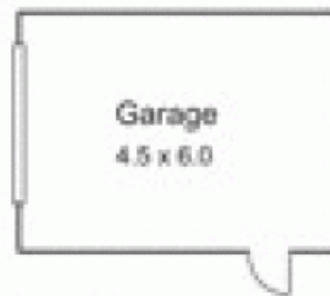


180 McDonalds Lane RIDDELLS CREEK VIC

8 🏠 2 🚗 4 🚗

Two homes in one! Each residence has separate entry. Comfortable accommodation in each offers 3 bedrooms plus study (4th bedroom), large kitchen/meals/living area, bathroom, laundry. Central courtyard, separate garage and some outbuildings. Land with interesting terrain, access to seasonal creek frontage and some good flat grazing areas. Within easy distance to Sunbury and Riddells Creek and simple commute to Melbourne C.B.D. Grand opportunity to live a country lifestyle with extended family or friends.

Building Size : 32 sqm
View : <https://www.kennedyandhunt.com.au/sale/vic/macedon-ranges/riddells-creek/residential/acreagesemirural/5848572>



Drawing is for illustration purposes only. Not drawn to scale. All measurements are approximate only.