

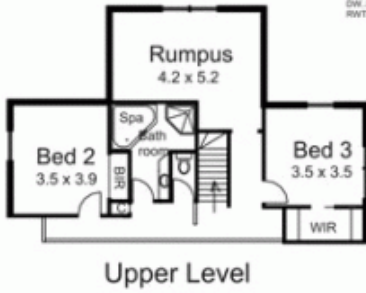


1644 Bacchus Marsh Road, Bullengarook GISBORNE SOUTH VIC

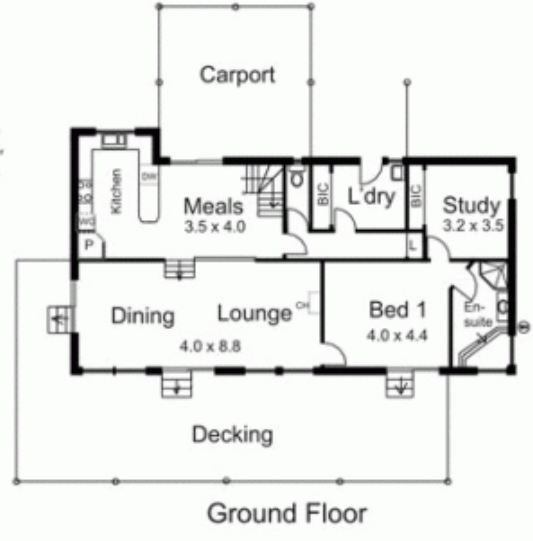
3 2 2

Appealing stone and weathered timber home perfectly positioned to capture the magnificent panorama. Accommodation comprises three bedrooms with the master bedroom downstairs, Ensuite, study or parents retreat, upstairs rumpus room, kitchen/meals area and lounge/dining room. Wonderful use of timber in the interior provides a warm country feel. An expansive deck flows on from the living space to fully appreciate your outlook. Take your lifestyle to new heights in this marvelous property!

Building Size : 20 sqm
Land Size : 153781 sqm
View : <https://www.kennedyandhunt.com.au/sale/vic/macedon-ranges/gisborne-south/residential/acreagesemirural/5848584>



Legend:
 B.C. Built in Cupboard
 B.R. Built in robe
 CH. Combustion Heater
 D.W. Dish Washer
 R.W.T. Rain Water tank



Drawing is for illustration purposes only. Not drawn to scale. All measurements are approximate only.