

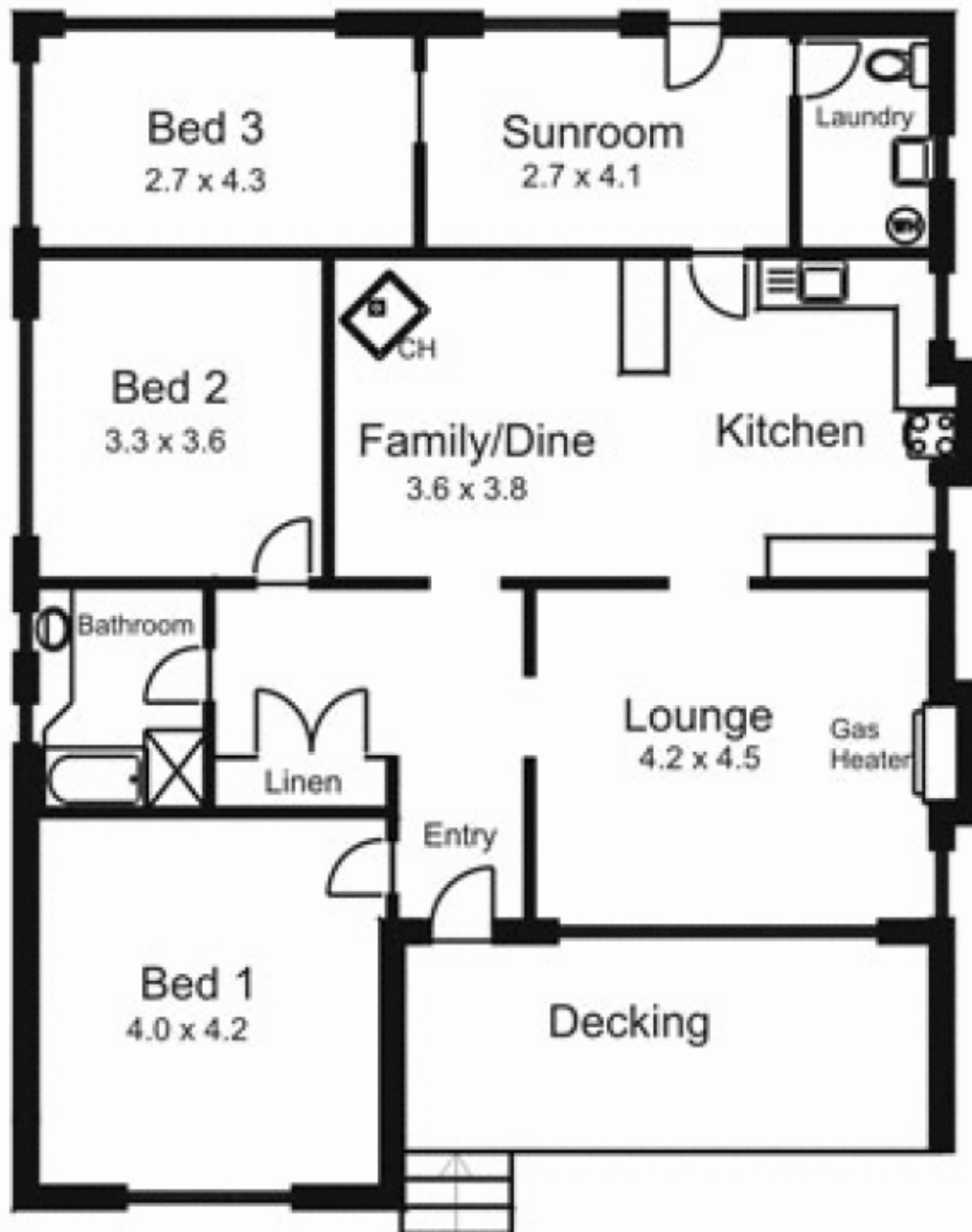


28 Goode Street GISBORNE VIC

3  **1** 

Comfortable, bright and beautifully elevated 3 bedroom weatherboard home. Easy walk to shops, cafes, churches, schools, parks and medical facilities. A great place to live or invest!

Building Size : 16 sqm
Land Size : 653 sqm
View : <https://www.kennedyandhunt.com.au/sale/vic/macedon-ranges/gisborne/residential/house/5848587>



All measurements are approximate only. Not drawn to scale.