

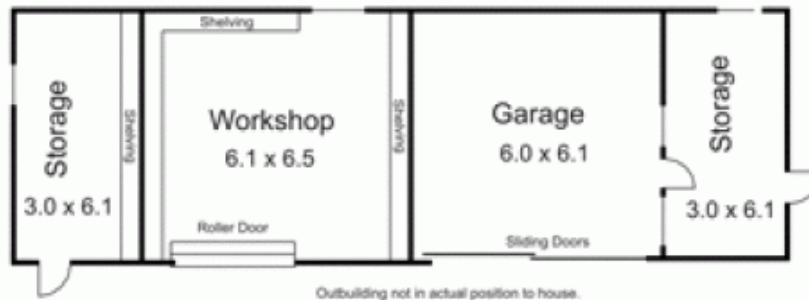


**119 Millett Road GISBORNE SOUTH VIC**

4 🏠 2 🚗 4 🚗

Fully renovated and presented to impress. Accommodation comprises four bedrooms kitchen/meals and two adjoining areas that include lounge, dining and entertaining space. Features include Ceaser stone bench tops, stainless steel appliances, fully ducted reverse cycle split system and much more. External highlights include elevated deck and pergola, bore, dam and large practical shedding. This excellent location allows seamless access to Sunbury and the Calder Freeway. Your rural lifestyle begins here!

**Building Size** : 20 sqm  
**Land Size** : 40469 sqm  
**View** : <https://www.kennedyandhunt.com.au/sale/vic/macedon-ranges/gisborne-south/residential/acreagesemirural/5848605>

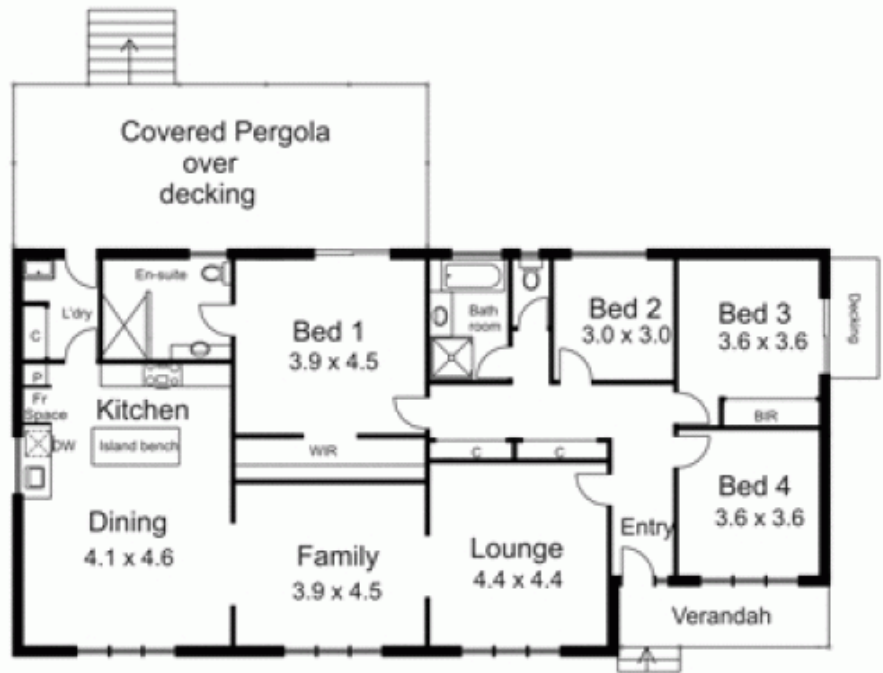


Outbuilding not in actual position to house.



Legend...  
 BR... Built in Robe  
 C... Cupboard  
 DW... Dish washer  
 Fr Space... Fridge space  
 L'dry... Laundry  
 WR... Walk in robe

Rain water tanks not in actual position to house



Drawing is for illustration purposes only. Not drawn to scale. All measurements are approximate only.