



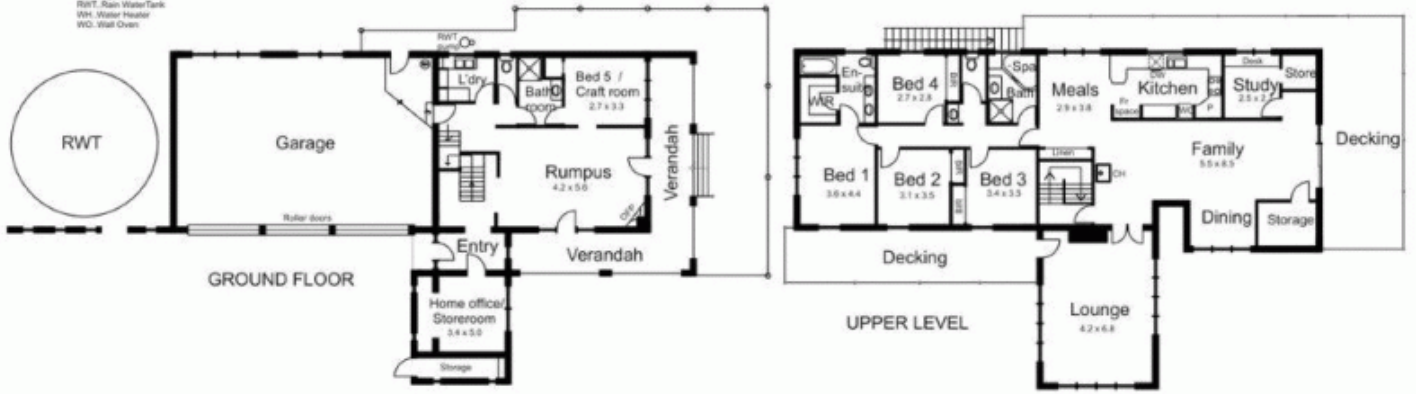
**145 Short Road GISBORNE SOUTH VIC**

4 🏠 3 🚗 3 🚗

Five bedrooms plus study - versatile family accommodation as well as guest/family or business space all in one attractive building. Established surrounds, great views to City skyline and distant forests. Plenty of space for family pets and a pony. All just minutes from Calder freeway, Gisborne township and facilities including shops, train station, schools.

**Building Size** : 40 sqm  
**View** : <https://www.kennedyandhunt.com.au/sale/vic/macedon-ranges/gisborne-south/residential/house/5848610>

- Legend...
- SH: Built in Shelf
  - CH: Combustion Heater
  - DW: Dishwasher
  - L: Linen
  - OPF: Open Fire Place
  - P: Pantry
  - RWT: Rain Water Tank
  - WH: Water Heater
  - WO: Wall Oven



Drawing is for illustration purposes only. Not drawn to scale. All measurements are approximate only.