

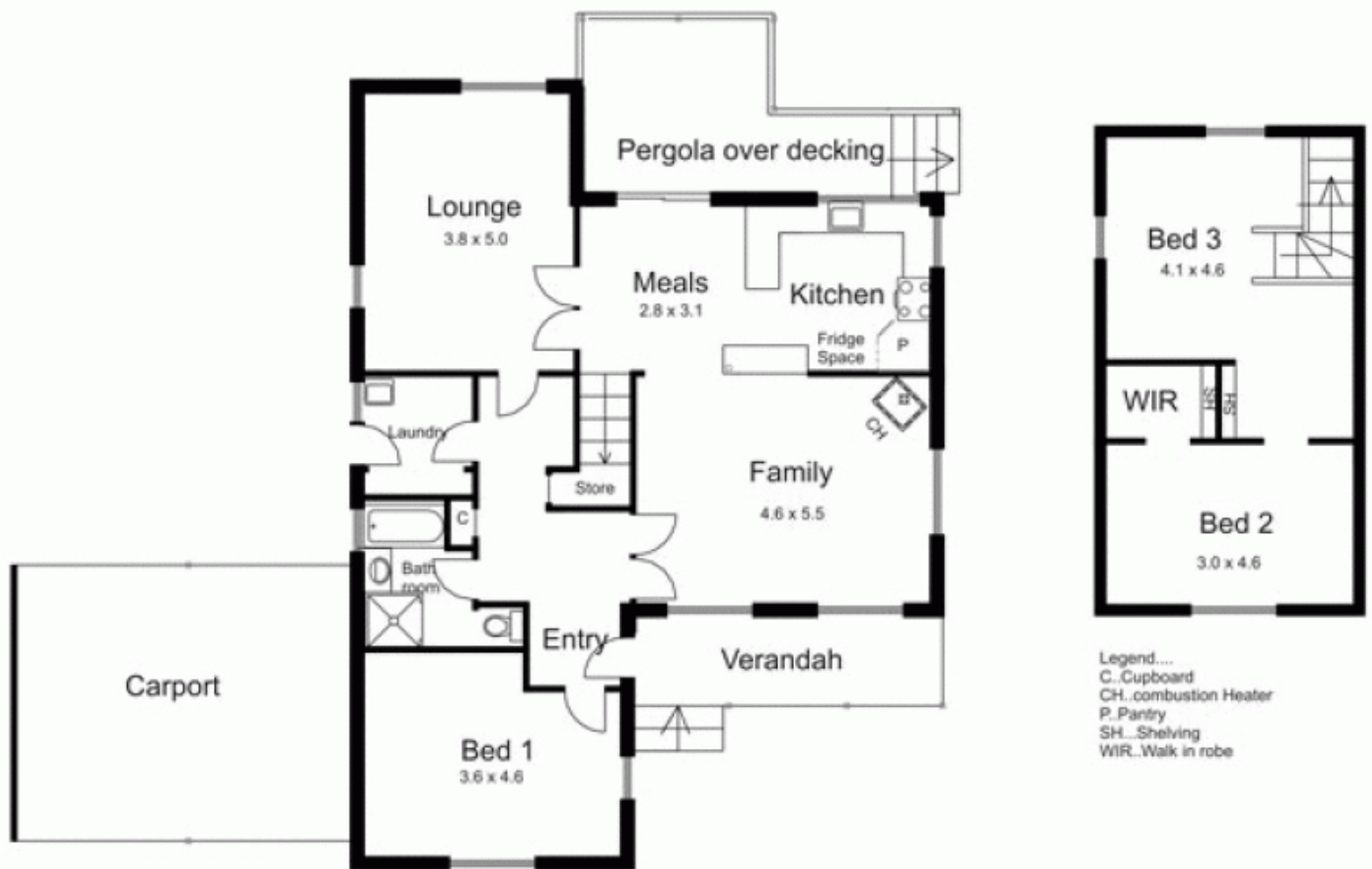


**1932 Mount Macedon Road WOODEND VIC**

3 1 2

A character filled home offering three bedrooms, kitchen/meals, family room and lounge/sitting room open to sunny northern decking. Features natural gas ducted heating, slow combustion heater and polished boards. Established cottage gardens with mature trees and shrubs. Double carport. City approx. 60 minutes by freeway or rail.

**Building Size** : 17 sqm  
**Land Size** : 2066 sqm  
**View** : <https://www.kennedyandhunt.com.au/sale/vic/greater-bendigo-region/woodend/residential/house/5848616>



Drawing is for illustration purposes only. Not drawn to scale. All measurements are approximate only.