






710 Mount Macedon MOUNT MACEDON VIC

6  **3**  **1** 

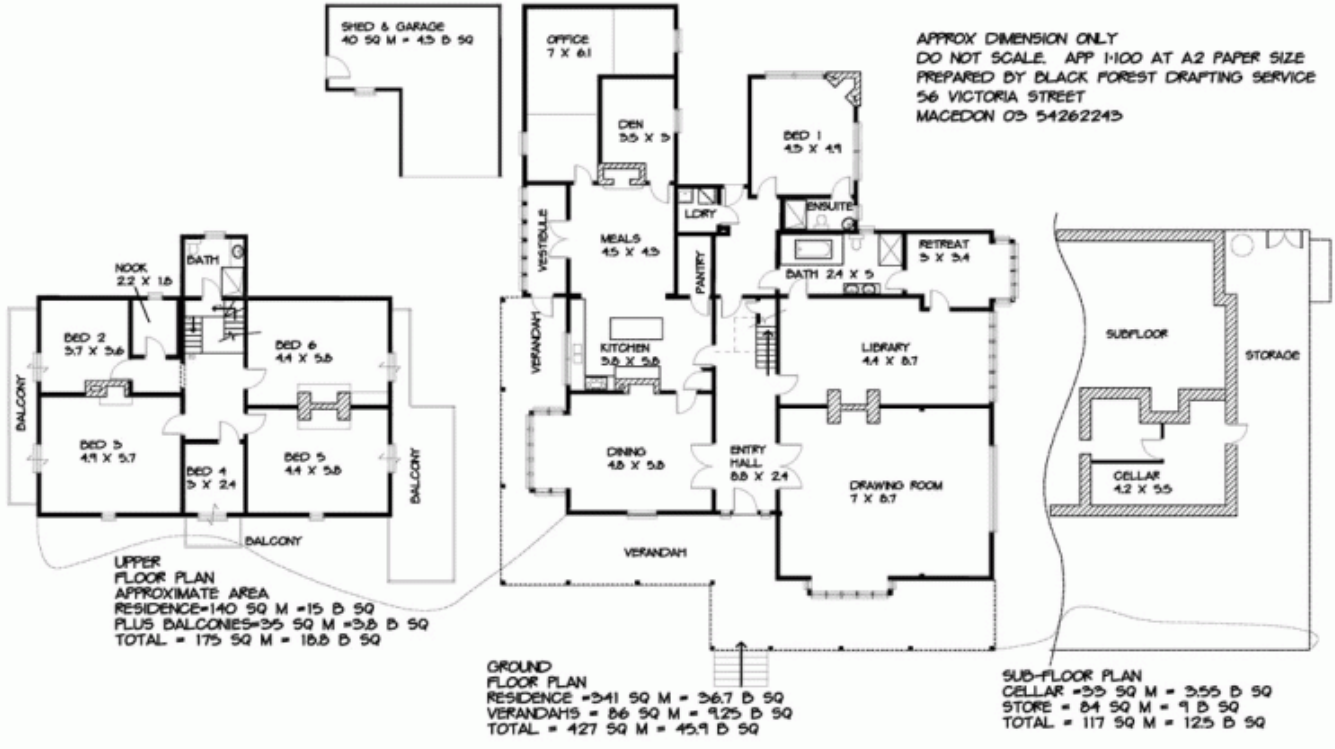
PRIOR OFFERS INVITED

An iconic Mount Macedon property set within magnificent and highly regarded gardens featuring significant European trees and amazing rhododendrons.

Grand Victorian era country residence with gracious formal living areas, 5/6 bedrooms, 3 bathrooms, plus office / study areas and return verandahs. Refurbished in recent years. Hydronic heating / 8 fireplaces.

Refer www.huntrealestate.com.au and www.timsburyestate.net.

Building Size : 55 sqm
View : <https://www.kennedyandhunt.com.au/sale/vic/macedon-ranges/mount-macedon/residential/house/5848629>



"TIMSBURY"
710 MOUNT MACEDON ROAD
MT MACEDON