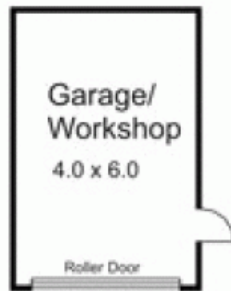


19 Pinelea Grove GISBORNE VIC

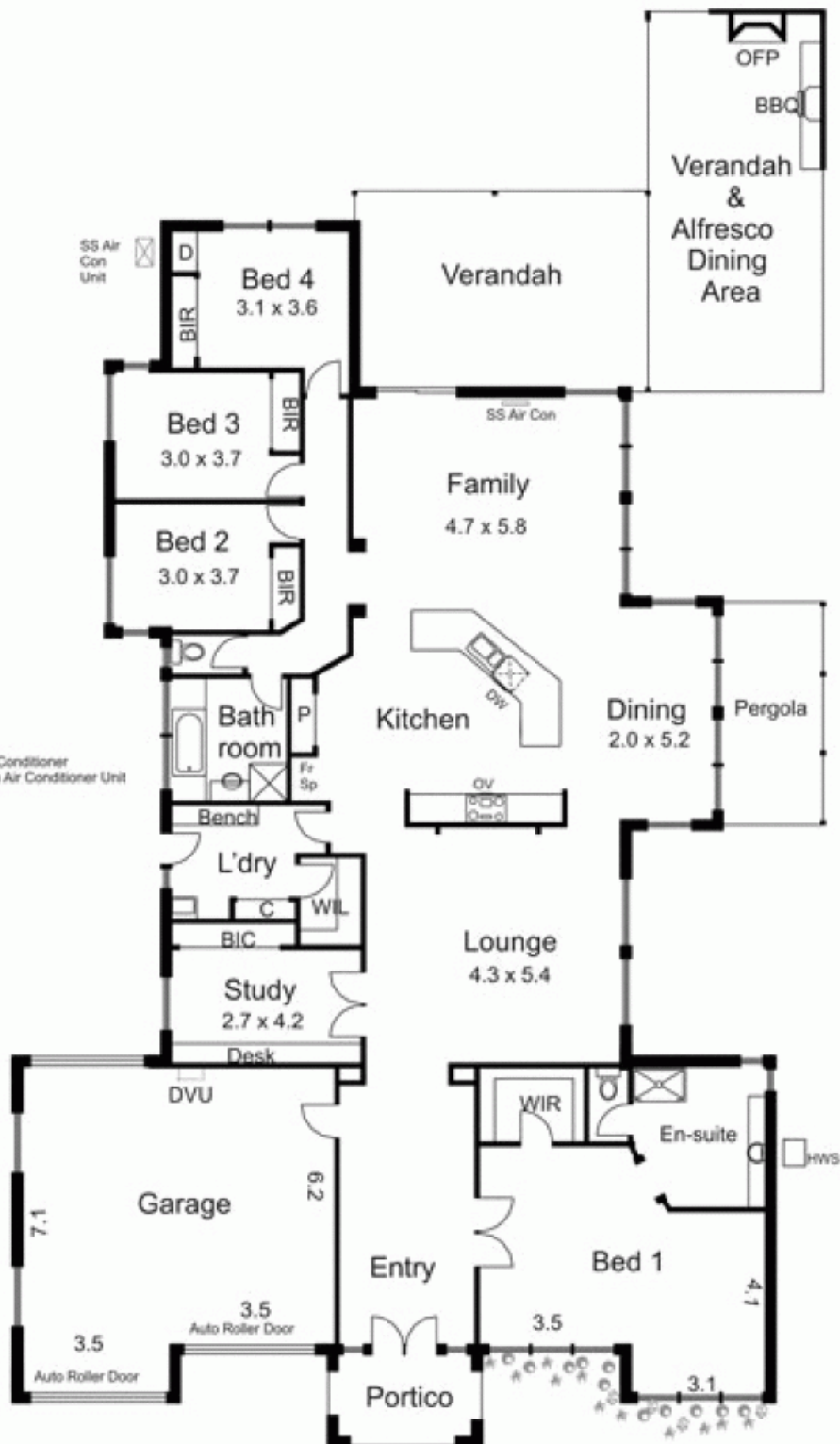
4 2 4

Seldom does the market place offer a property of such quality and design! Expansive layout includes feature walls and ceilings, excellent open plan zone, quality external living space and much more. This is a home that makes you feel fabulous! If ever there was a catalyst to change your living environment then this is it!

Price : \$ 695,000
Building Size : 27 sqm
Land Size : 1016 sqm
View : <https://www.kennedyandhunt.com.au/sale/vic/macedon-ranges/gisborne/residential/house/5848647>



- Legend...
- BIR... built in Robe
 - BBQ... Barbeque
 - C... Cupboard
 - D... Desk
 - DW... Dishwasher
 - DVU... Ducted Vac Unit
 - HWS... Hot Water Service
 - OFF... Open Fire Place
 - OV... Oven
 - SS Air Con... Split System Air Conditioner
 - SS Air Con Unit... Split System Air Conditioner Unit
 - WIL... Walk in Linen
 - WIR... Walk in Robe



Drawing is for illustration purposes only. Not drawn to scale. All measurements are approximate only.