



10 Carbine Court NEW GISBORNE VIC

3 2 1

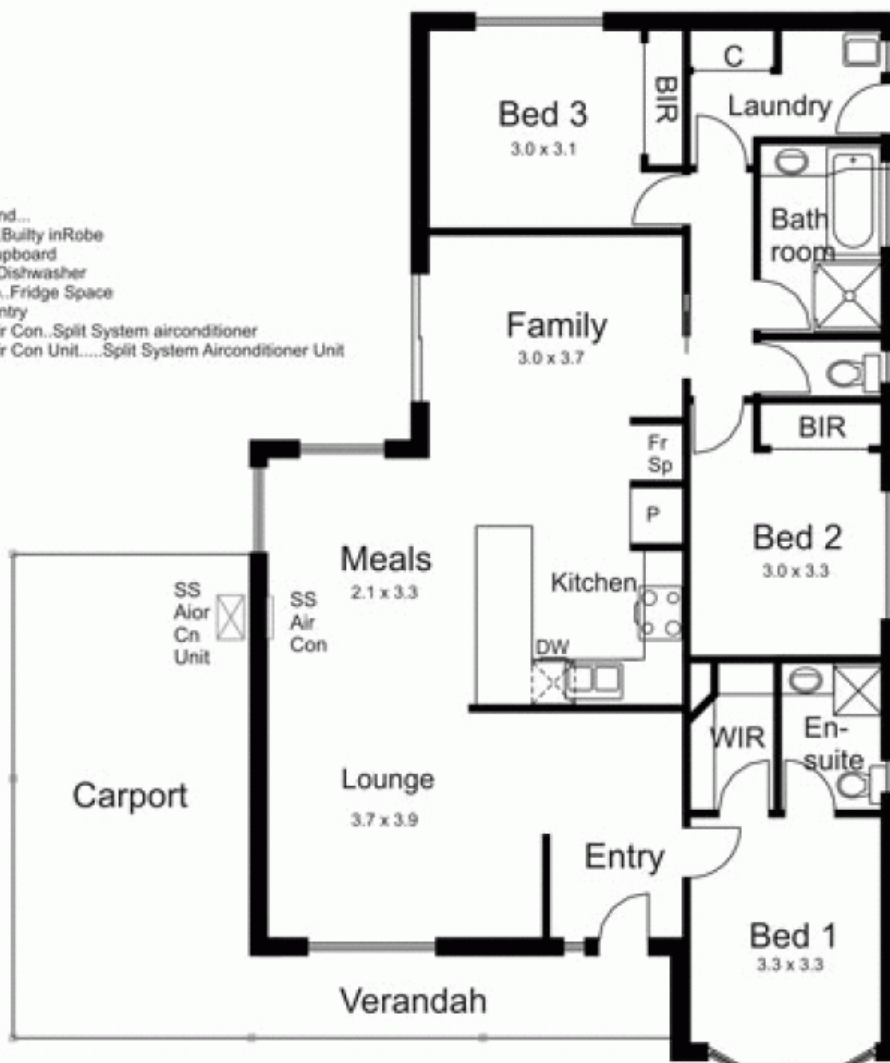
Rare opportunity to purchase an affordable property in a great court location. Proximity to station and primary schools is ideal. This home has a comfortable level of accommodation along with ample yard and shed space. A property to suit a broad range of buyers from first homebuyers to retirees. Dont miss this excellent offering!

Building Size : 16 sqm
Land Size : 907 sqm
View : <https://www.kennedyandhunt.com.au/sale/vic/macedon-ranges/new-gisborne/residential/house/5848673>



Garage not in actual position to house

Legend...
 BIR...Bulky inRobe
 C...Cupboard
 DW...Dishwasher
 Fr Sp...Fridge Space
 P...Pantry
 SS Air Con...Split System airconditioner
 SS Air Con Unit.....Split System Airconditioner Unit



Drawing is for illustration purposes only. Not drawn to scale. All measurements are approximate only.