




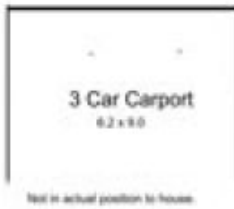


**90 Kirbys Lane WOODEND VIC**

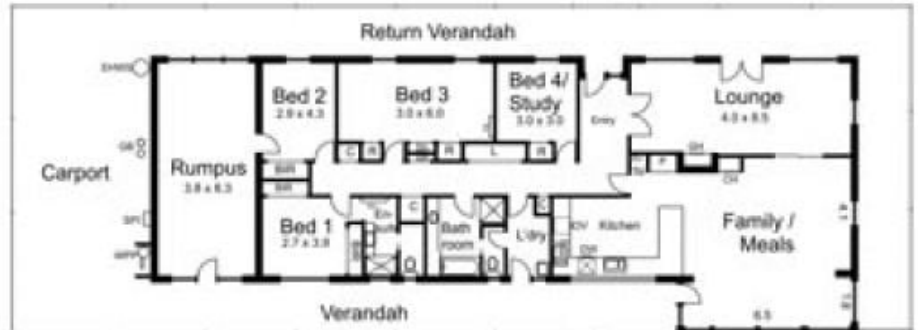
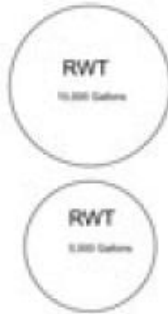
4  2  5 

Long tree-lined driveway leads to the country style home offering four bedrooms, three generous living spaces, ensuite and main bathroom. North facing kitchen/dining area with double glazing. Pretty cottage gardens. Double and triple carport, machinery shed, double steel garage/workshop and cattle yards. Quality pasture with water to each of the eight paddocks. Tank, bore and dam water. Suits various farming pursuits. Minutes from town and quick link to Calder freeway. A great lifestyle opportunity.

**Building Size** : 26 sqm  
**Land Size** : 161600 sqm  
**View** : <https://www.kennedyandhunt.com.au/sale/vic/greater-bendigo-region/woodend/residential/house/5848677>



- Legend...
- BR... Built in Robe
  - C... Cupboard
  - CH... Combustion Heater
  - DW... Dishwasher
  - EH... Electric Heater
  - EHWS... Electric Hot Water Service
  - FS... Fridge Space
  - HP... Hot Plate
  - GB... Gas Bottles
  - GH... Gas Heater
  - OV... Oven/ Family
  - R... Robe
  - SH... Shaving
  - SPI... Solar Power Inverter
  - WPP... Water Pressure Pump



Drawing is for illustration purposes only. Not drawn to scale. All measurements are approximate only.