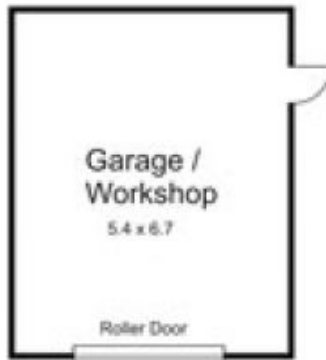




196 Station Road NEW GISBORNE VIC

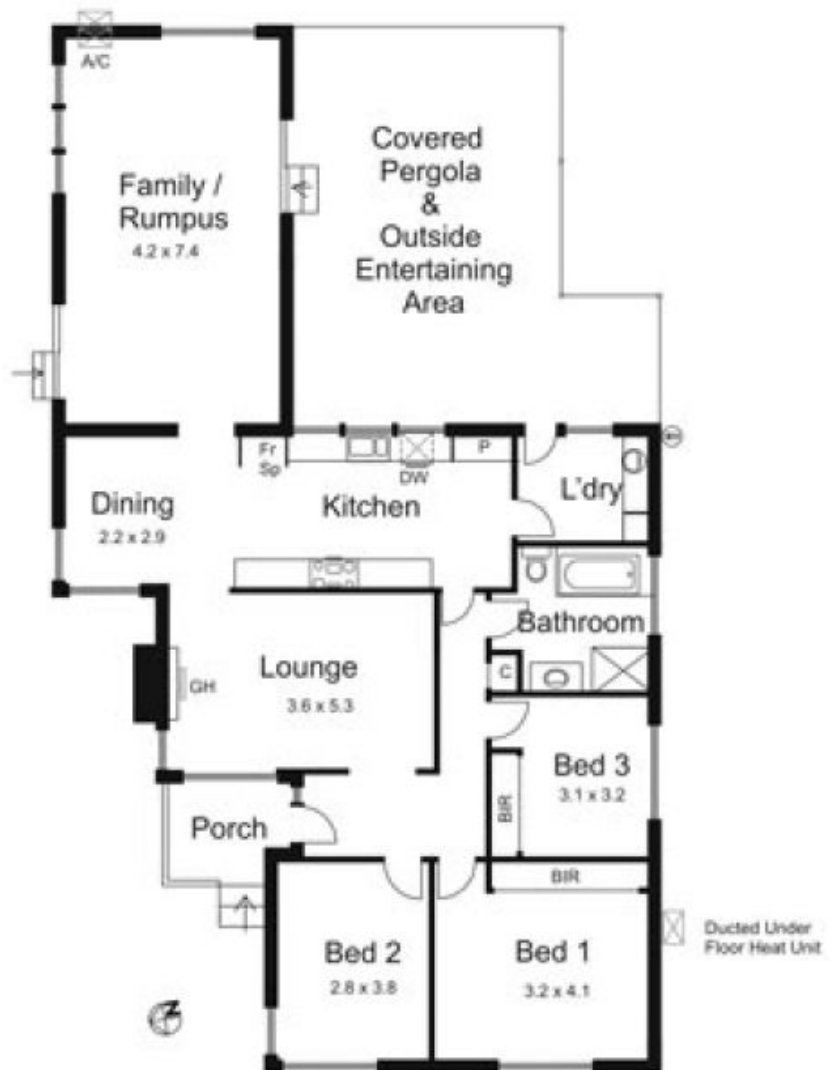
3  1  1 

**Building Size** : 16 sqm  
**Land Size** : 786 sqm  
**View** : <https://www.kennedyandhunt.com.au/sale/vic/macedon-ranges/new-gisborne/residential/house/5848689>



Not in actual position to house

- Legend.
- A/C. Airconditioner
  - BIR. Built in Robe
  - C. Cupboard
  - DW. Dishwasher
  - Fr Sp. Fridge Space
  - GH. Gas Heater ( not connected)
  - P. Pantry
  - WH. Water Heater



Drawing is for illustration purposes only. Not drawn to scale. All measurements are approximate only.