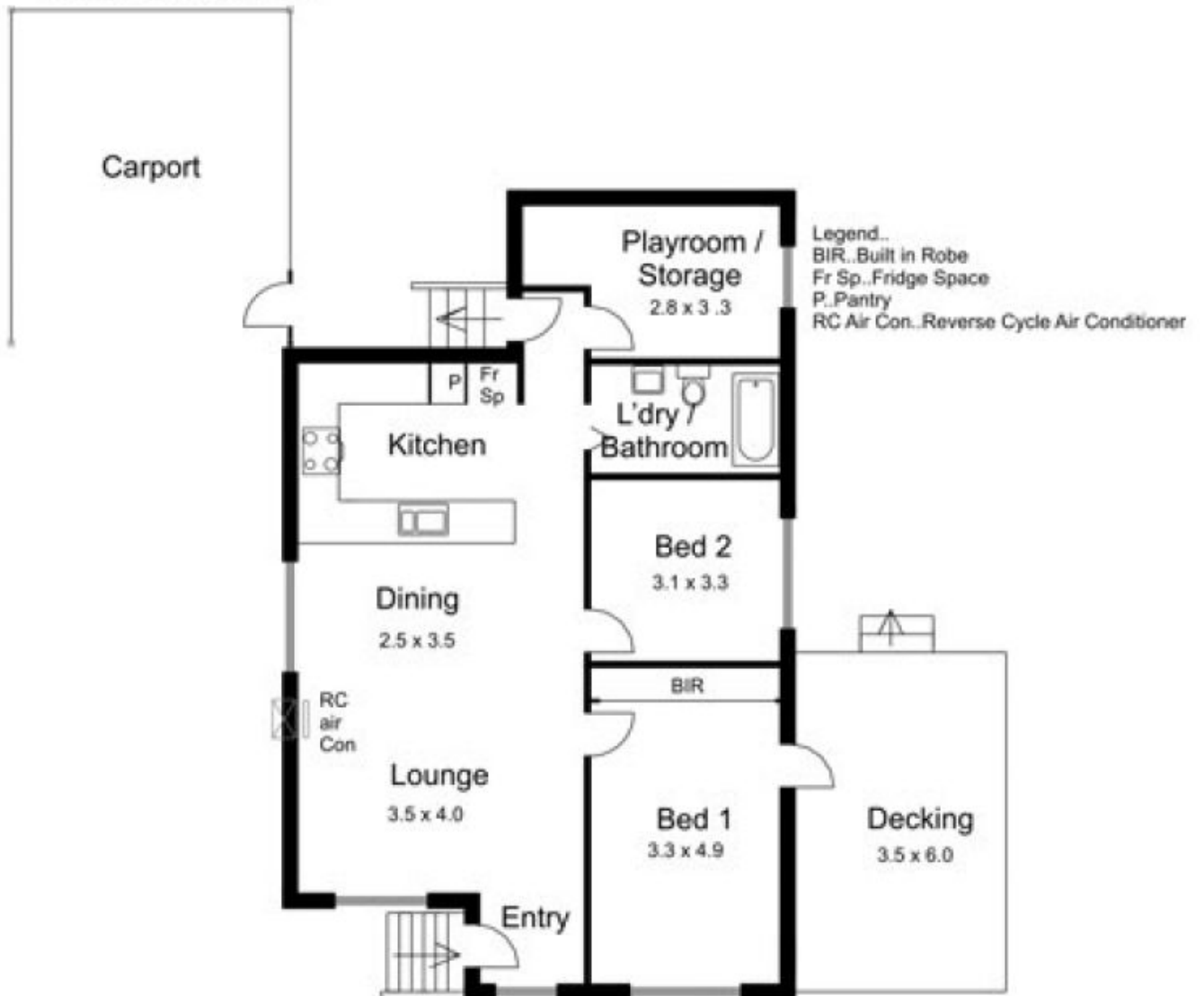
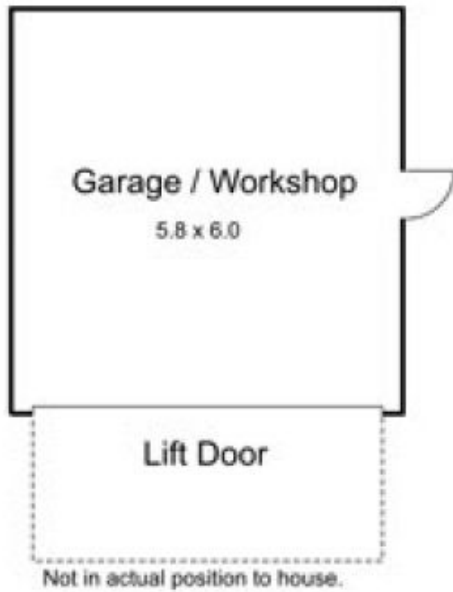


3 Lyell Street GISBORNE VIC

2  1  2 

**Building Size** : 10 sqm  
**Land Size** : 592 sqm  
**View** : <https://www.kennedyandhunt.com.au/sale/vic/macedon-ranges/gisborne/residential/house/5848692>



All measurements are approximate only.  
Not drawn to scale.