



**25 Worcester Road GISBORNE VIC**

2 1 4

Already subdivided - 4 separate titles

All units currently let

Established & convenient residential location

An affordable & rare opportunity for small

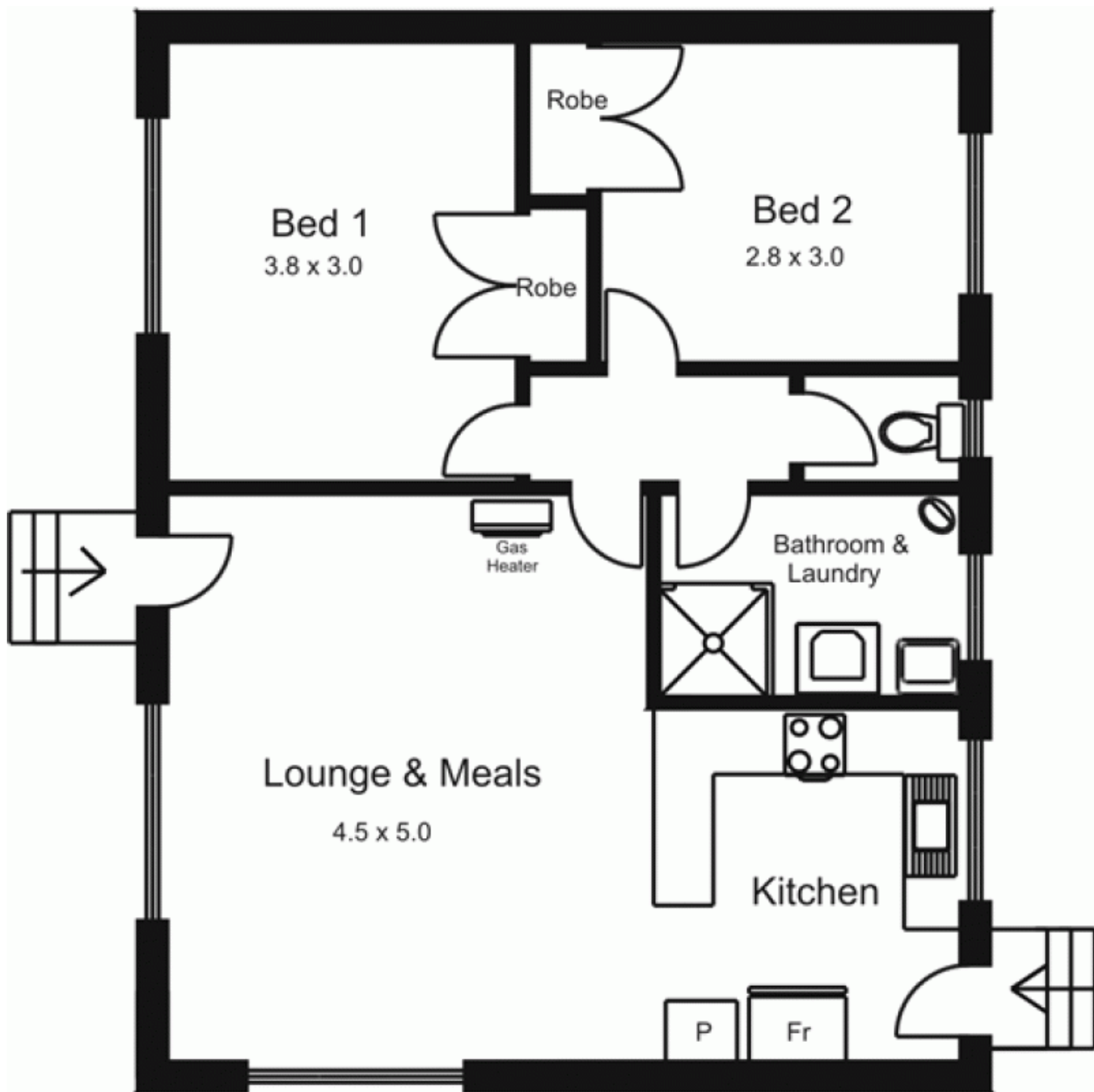
investor/developer/syndicate

Enquire today

**Building Size** : 7 sqm

**Land Size** : 1056 sqm

**View** : <https://www.kennedyandhunt.com.au/sale/vic/macedon-ranges/gisborne/residential/block-of-units/5848696>



All measurements are approximate only. Not drawn to scale.

This plan is typical of all units