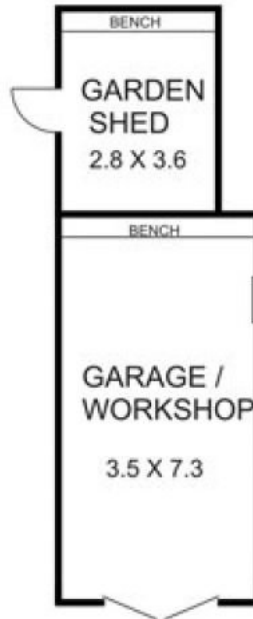
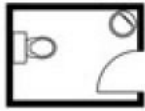


192 Station Road NEW GISBORNE VIC

2 1 3

Neat and tidy older style brick veneer home with hardwood floors, natural gas ducted heating and lots of character. Both bathroom (with spa) and kitchen renovated in recent years. Covered pergola, double carport and steel garage. Convenient to Station. Subdivisional potential (S.T.C.A.).

Building Size : 12 sqm
Land Size : 790 sqm
View : <https://www.kennedyandhunt.com.au/sale/vic/macedon-ranges/new-gisborne/residential/house/5848722>



NOTE....OUTBUILDINGS NOT IN ACTUAL POSITION TO HOUSE

LEGEND....
 BIR. BUILT IN ROBE
 C. CUPBOARD
 FR SP. FRIDGE SPACE
 HWS. HOT WATER SERVICE
 L DRY. LAUNDRY
 L. LINEN
 R. ROBE

