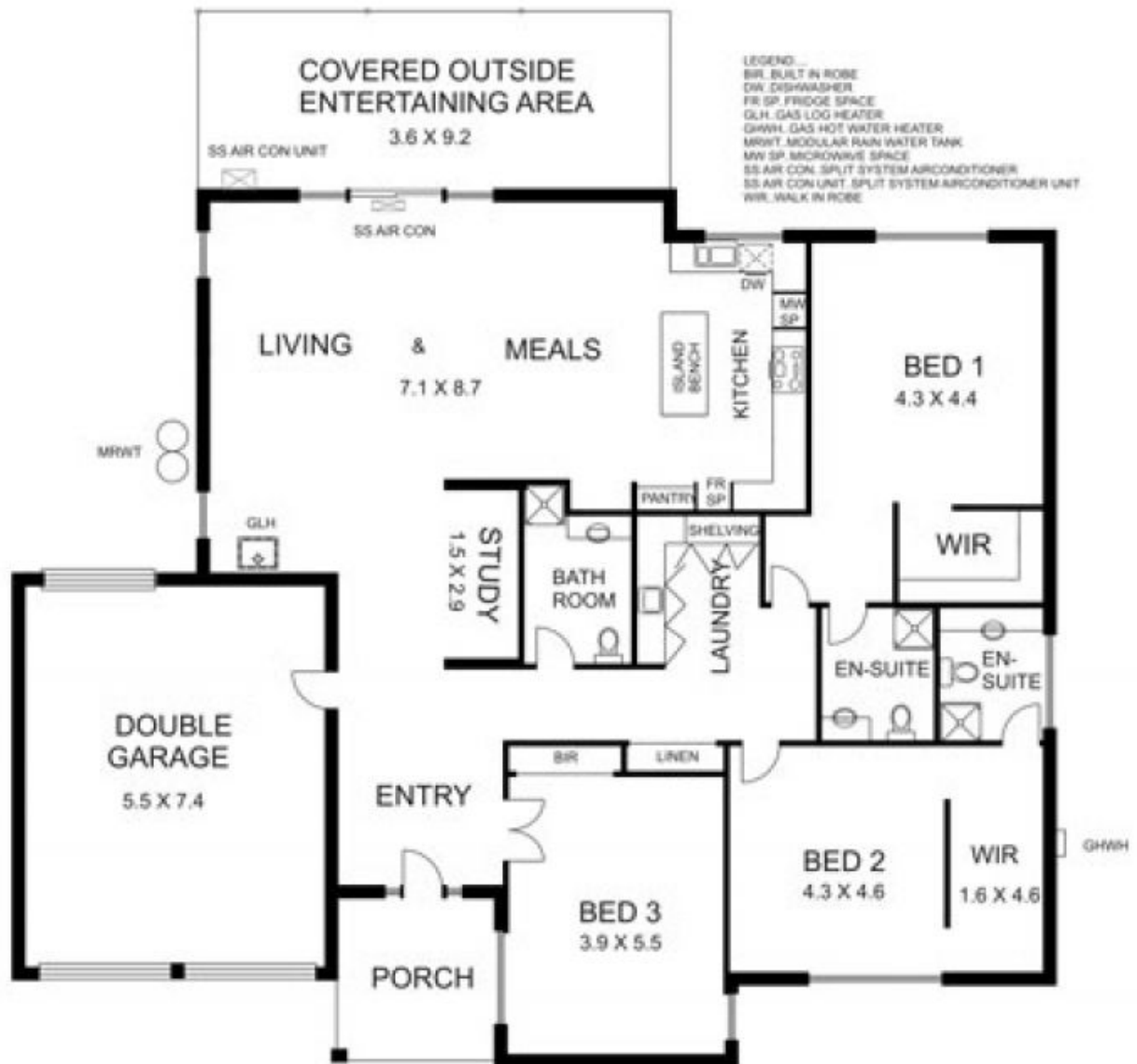


**17A Worcester Road GISBORNE VIC**

5 🛏 3 🚿 2 🚗

On its own separate title, 17A Worcester Road offers a great balance of stylish easy living and secluded, covered outdoor entertaining. Interior has modern finishes, peaceful colour schemes and quality fittings and appointments. Accommodation provides wide entry foyer, three large bedrooms, open plan kitchen/meals/living, study alcove, three bathrooms, European style laundry, double garage. If you want to scale back on outdoor work and still have a fabulous home, this property is ideal! Within easy walking distance to town facilities.

**Building Size** : 25 sqm  
**Land Size** : 757 sqm  
**View** : <https://www.kennedyandhunt.com.au/sale/vic/macedon-ranges/gisborne/residential/house/5848724>



DRAWING IS FOR ILLUSTRATION PURPOSES ONLY. NOT DRAWN TO SCALE. ALL MEASUREMENTS ARE APPROXIMATE ONLY.