

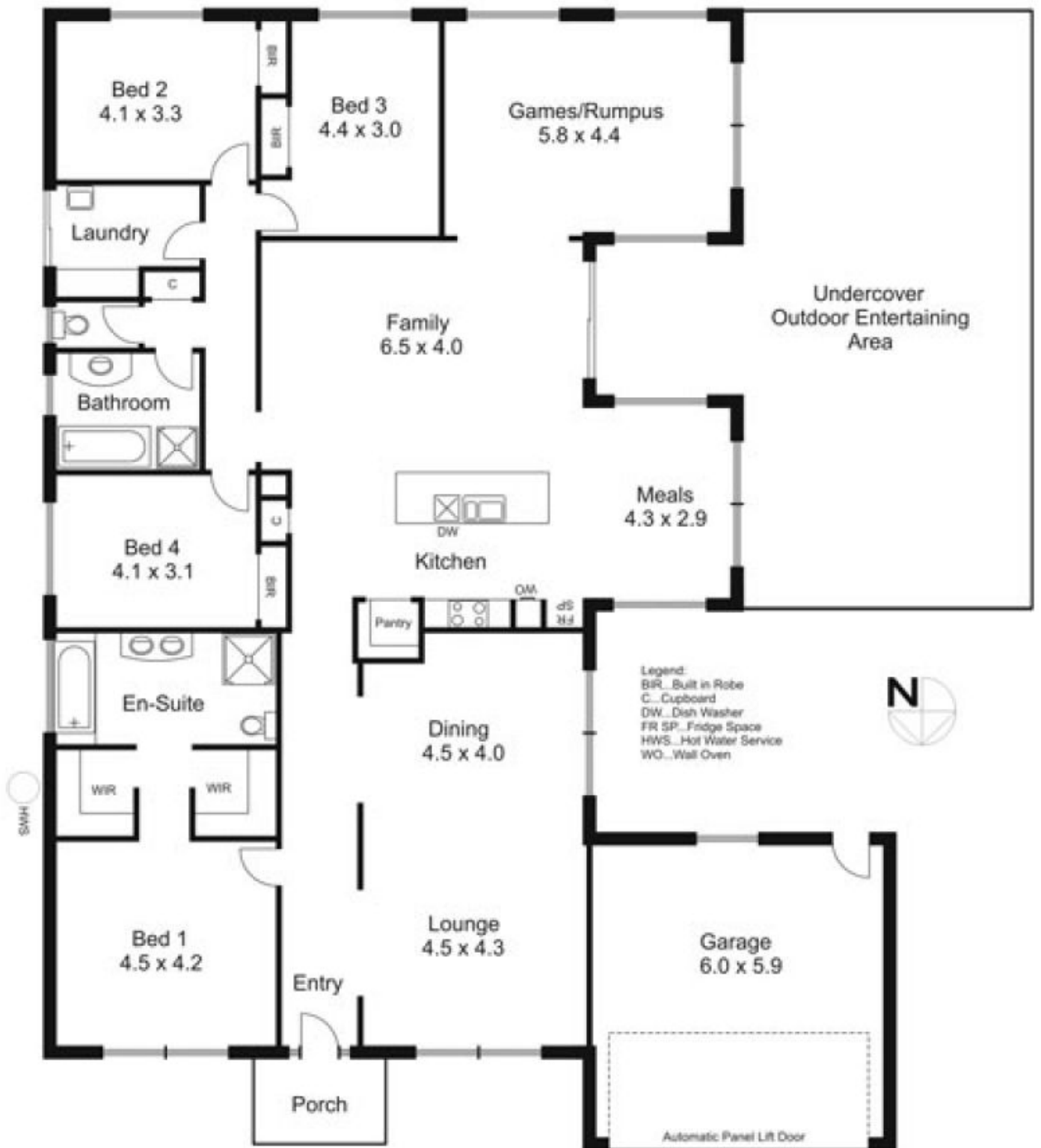


10 Hyperno Court NEW GISBORNE VIC

4  2  2 

Bright & airy with 4 large bedrooms, full ensuite, 3 living areas & fantastic pergola. Natural gas ducted heating & wood heater. Convenient to station, bus and primary schools. Quiet location adjacent reserve.

Building Size : 26 sqm
Land Size : 1230 sqm
View : <https://www.kennedyandhunt.com.au/sale/vic/macedon-ranges/new-gisborne/residential/house/5848736>



Drawing for illustration purposes only. Not drawn to scale. All measurements are approximate only.