

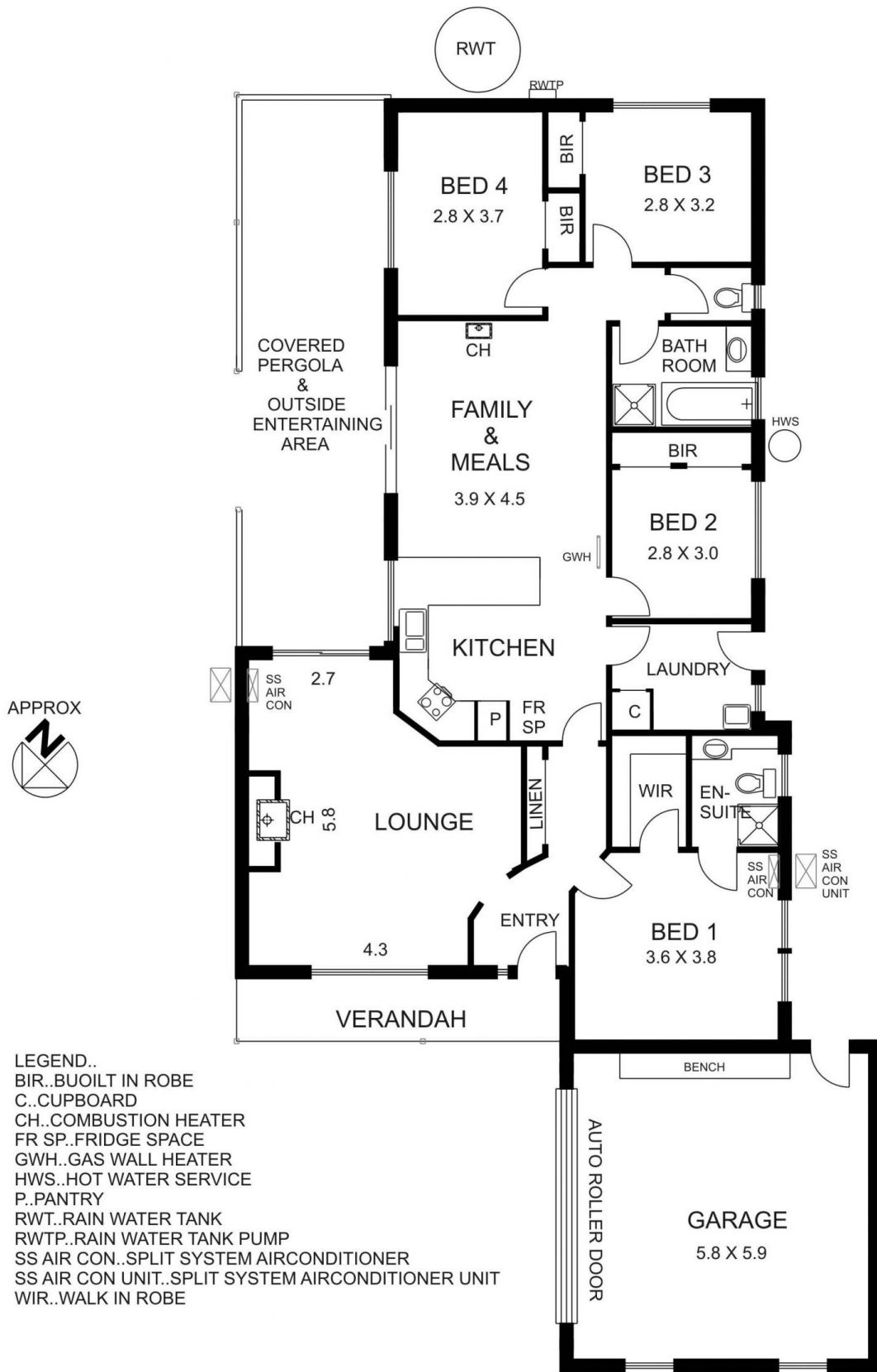


**5 Sunnypark Close GISBORNE VIC**

4 2 2

Well appointed four bedroom brick veneer home offering cosy lounge with character, light kitchen/meals area, ensuite, main bathroom & double integrated garage. Established, manageable garden, beautifully private undercover outdoor area. On the edge of town and within minutes to all facilities and connection to freeway. A perfect package for first home buyers, down sizers or even investors.

**Building Size** : 17 sqm  
**Land Size** : 665 sqm  
**View** : <https://www.kennedyandhunt.com.au/sale/vic/macedon-ranges/gisborne/residential/house/5848754>



DRAWING IS FOR ILLUSTRATION PURPOSES ONLY. NOT DRAWN TO SCALE. ALL MEASUREMENTS ARE APPROXIMATE ONLY.