

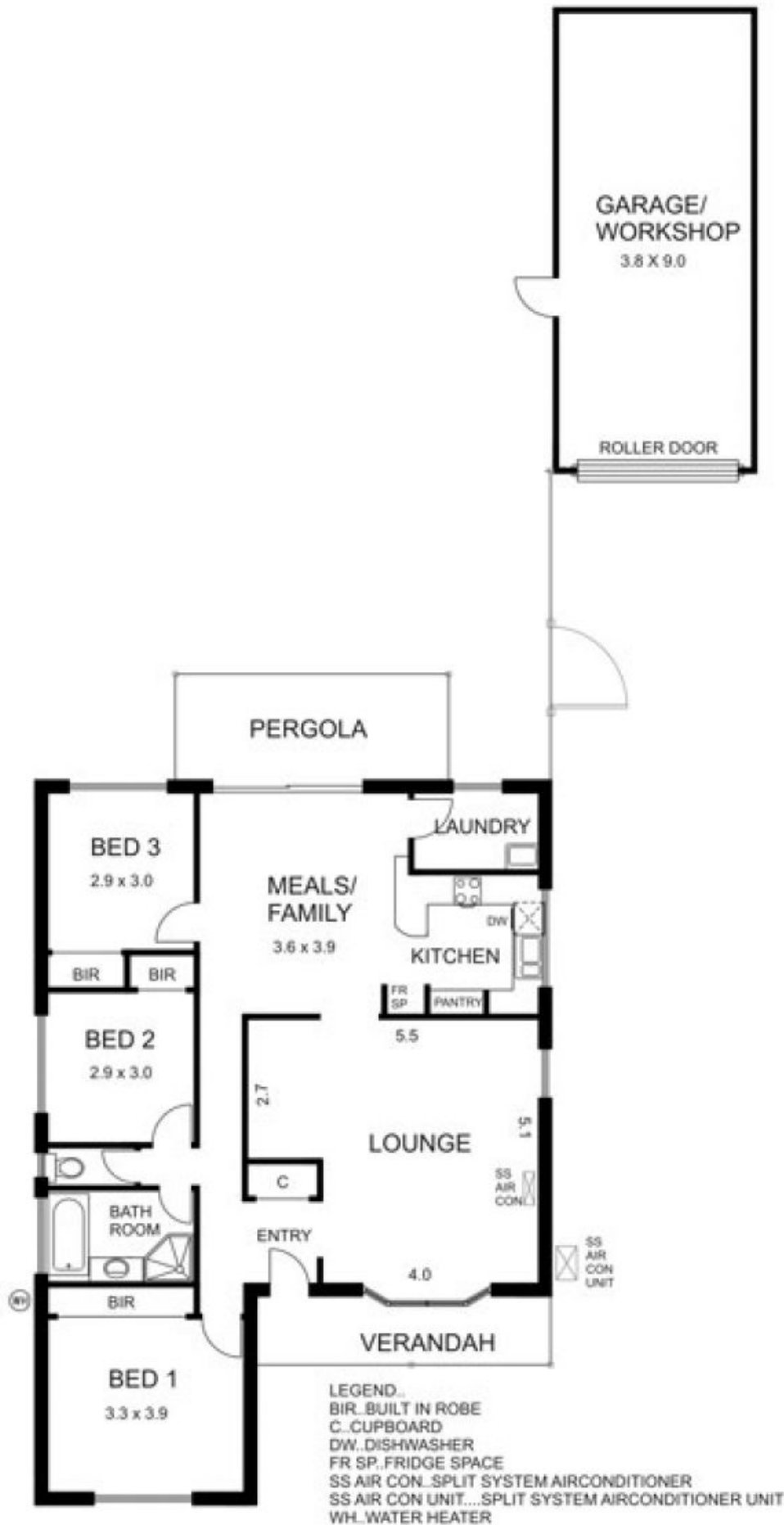


11 Scenic Court GISBORNE VIC

3  1  2 

Opposite parkland and within easy striking distance of township. Three bedroom brick veneer home with good sized lounge plus separate kitchen/dining area, fresh and appealing bathroom and laundry. Paved area at the rear plus large colorbond garage with concrete floor complete the package. Great starter home or investment property.

Building Size : 14 sqm
Land Size : 676 sqm
View : <https://www.kennedyandhunt.com.au/sale/vic/macedon-ranges/gisborne/residential/house/5848761>



DRAWING IS FOR ILLUSTRATION PURPOSES ONLY. NOT DRAWN TO SCALE. ALL MEASUREMENTS ARE APPROXIMATE ONLY.