

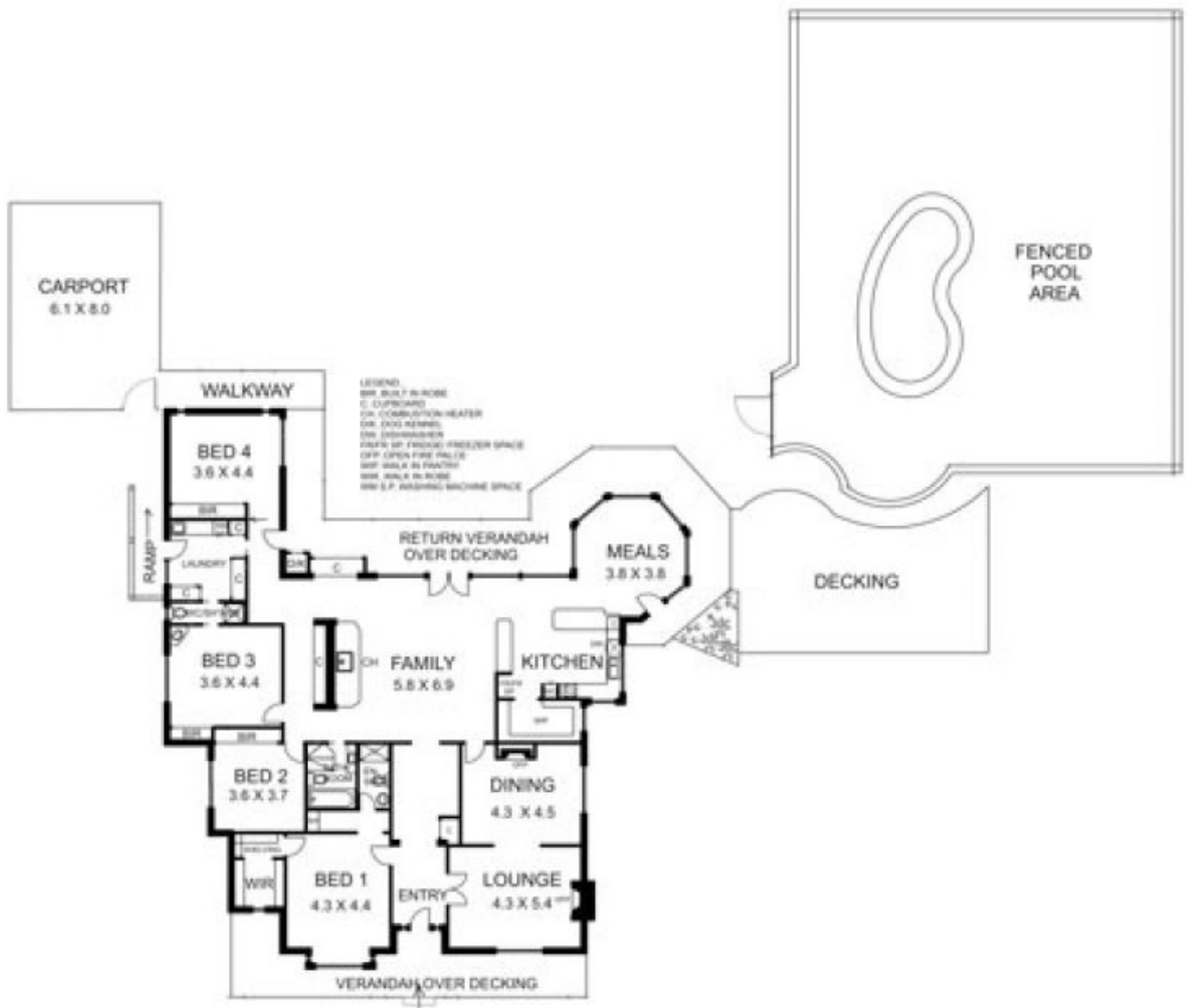


**86 Ferrier Road NEW GISBORNE VIC**

4 🚗 3 🚗 11 🚗

The classic timber residence offers spacious and stylish comfort comprising four bedrooms, two ensuites and bathroom, formal lounge and dining room, both with open fire places. Casual family area with impressive architectural features and north facing aspect. Modern well equipped kitchen and meals area overlooking the gardens, outdoor living space and inground swimming pool. The offering also includes a separate two bedroom cottage, numerous outbuildings including large workshop/office and triple carport. Easy freeway access (CBD within 50 minutes) and short distance to train station. A select and appealing property.

**Building Size** : 30 sqm  
**Land Size** : 10480 sqm  
**View** : <https://www.kennedyandhunt.com.au/sale/vic/macedon-ranges/new-gisborne/residential/house/5848762>



DRAWING IS FOR ILLUSTRATION PURPOSES ONLY. NOT DRAWN TO SCALE. ALL MEASUREMENTS ARE APPROXIMATE ONLY.



DRAWING IS FOR ILLUSTRATION PURPOSES ONLY. NOT DRAWN TO SCALE. ALL MEASUREMENTS ARE APPROXIMATE ONLY.