



**106 Short Road GISBORNE VIC**

4 2 6

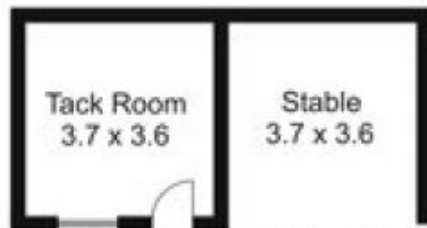
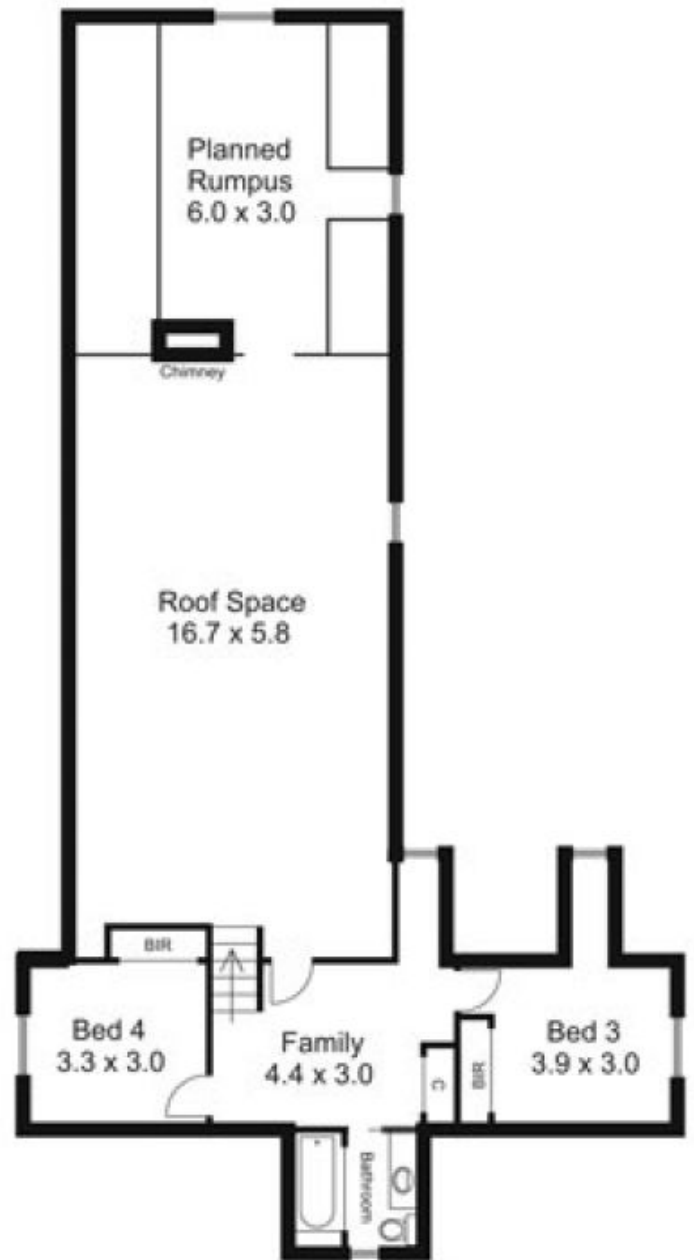
Beautifully established property offering far reaching views, pretty gardens and very attractive double storey family accommodation with character. The interior of the home provides four double bedrooms, study, spacious lounge/dining room, cosy kitchen/family area, 2 bathrooms and laundry. Good quality appointments throughout. Double garage, high clearance carport, stable/ tack room, large colorbond shed plus utility shedding, dams and seasonal creek make this the perfect farmlet for the whole family. Only minutes into town and easy link to Calder freeway. A well maintained lifestyle property in a select area.

**Building Size** : 24 sqm  
**Land Size** : 40000 sqm  
**View** : <https://www.kennedyandhunt.com.au/sale/vic/macedon-ranges/gisborne/residential/house/5848782>

### Ground Floor



### First Floor



Note: Tack Room and Stable not in actual position to house



Note: Colourbond Shed not in actual position to house