

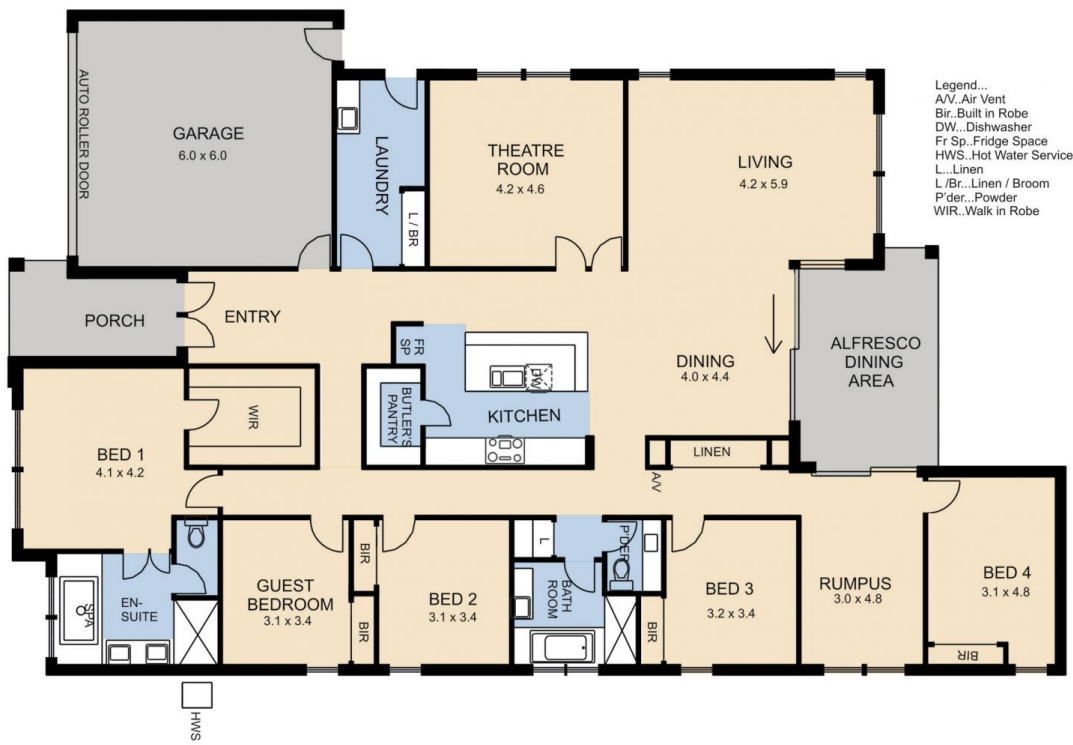


**39 Morand Street GISBORNE VIC**

5 🚗 2 🚚 2 🚗

Elevated north facing position, panoramic views and contemporary style. Space for all the family inside and out. The interior offers three generous living spaces, covered outdoor entertaining area, kitchen with butlers pantry, main bedroom with luxury ensuite and the list goes on. High quality fittings and fixtures. There's room to play, cultivate a veggie plot, and ample space for a shed/workshop (power to the site already), plus there's a fully integrated double garage. Nearly too good to be true!

**Building Size** : 29 sqm  
**Land Size** : 1599 sqm  
**View** : <https://www.kennedyandhunt.com.au/sale/vic/macedon-ranges/gisborne/residential/house/5848810>



DRAWING IS FOR ILLUSTRATION PURPOSES ONLY. NOT DRAWN TO SCALE. ALL MEASUREMENTS ARE APPROXIMATE ONLY.