



1 Childers Road MOUNT MACEDON VIC

4 🏠 3 🚿 2 🚗

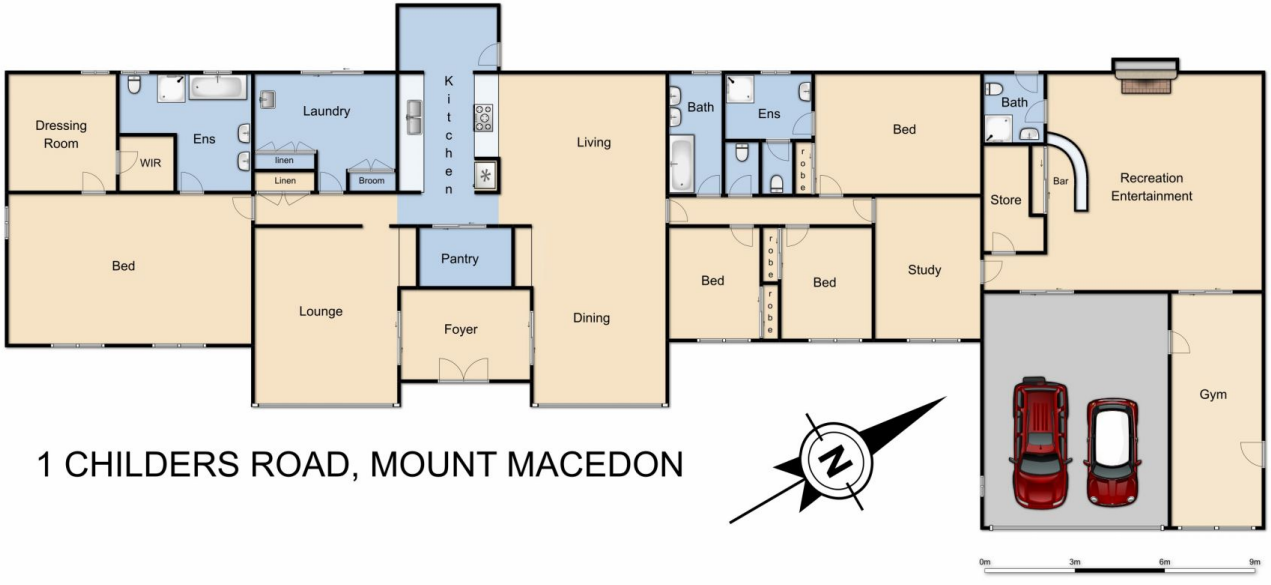
Tarn House offers an exceptional opportunity to secure one of Mount Macedon's charming lifestyle properties within a glorious garden setting. Situated on approximately 5 acres and once part of the historic 'Dreamthorpe' estate, Tarn House offers a substantial home of approx. 50 squares. Comprising 4 large bedrooms, 3 bathrooms and an enormous main bedroom with ensuite and dressing room. The substantial kitchen offers a large walk-in pantry and breakfast room overlooking the orchard. The formal rooms include a light filled sitting room, formal lounge, dining room and a huge entertainment room and gymnasium, all with magnificent views overlooking the sweeping lawn and established garden.

The 5 acre private garden offers 2 stunning lakes, mature trees, oaks, tulip tree, redwood, crab apple walk, a birch grove and an orchard. The Turritable Creek meanders

Land Size : 20000 sqm
View : <https://www.kennedyandhunt.com.au/sale/vic/macedon-ranges/mount-macedon/residential/house/5848959>



Jason Kennedy
03 5428 2544



1 CHILDERS ROAD, MOUNT MACEDON



0m 3m 6m 9m

Whilst every attempt has been made to ensure the accuracy of the floor plan contained here, measurements of doors, windows, rooms and any other items are approximate and no responsibility is taken for any error, omission, or mis-statement. This plan is for illustrative purposes only and should be used as such by any prospective purchaser. The services, systems and appliances shown have not been tested and no guarantee as to their operability or efficiency can be given.