



10 Benson Road GISBORNE SOUTH VIC

4 🏠 2 🚗 4 🚗

This well built family home was constructed to the highest standards, additional features including double glazing to all north facing windows, additional insulation throughout, solar panels, zoned slab heating, plus huge undercover outdoor entertaining area.

Accommodation comprises four bedrooms, all with robes, ensuite to masters, central family bathroom, plus the bonus of two large separate living areas ? all with access to covered entertainment spaces.

Outstanding horse facilities to suit the most fastidious horse lover including tack room, 3 day yards, walk in walk out yard, 2 stables and float wash area.

Additionally, the property offers spring fed creek, great dam, electrified fencing and numerous fruit trees.

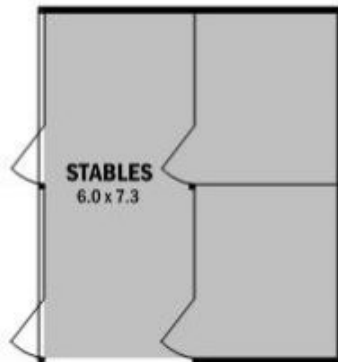
Easy access to horse riding trails, IR Robertson reserve, running tracks, tennis club and east freeway access to Sunbury and Gisborne.

View : <https://www.kennedyandhunt.com.au/sale/vic/macedon-ranges/gisborne-south/residential/acreage-semirural/5848962>



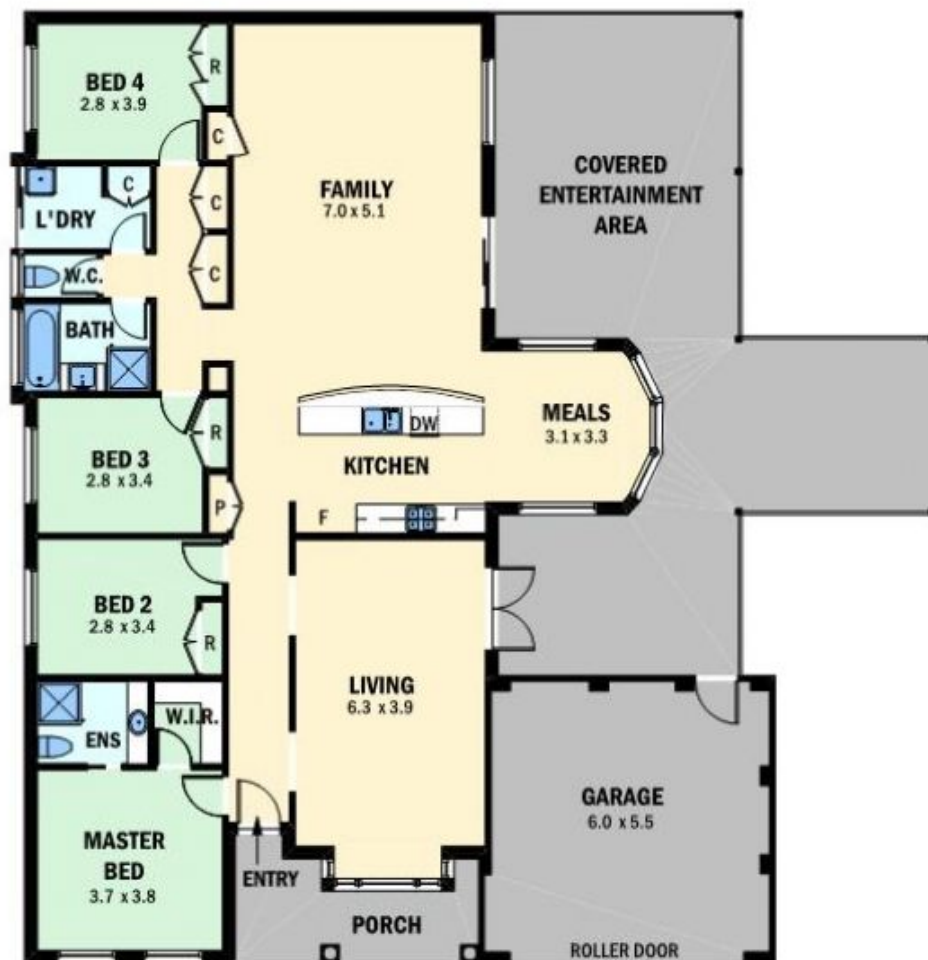
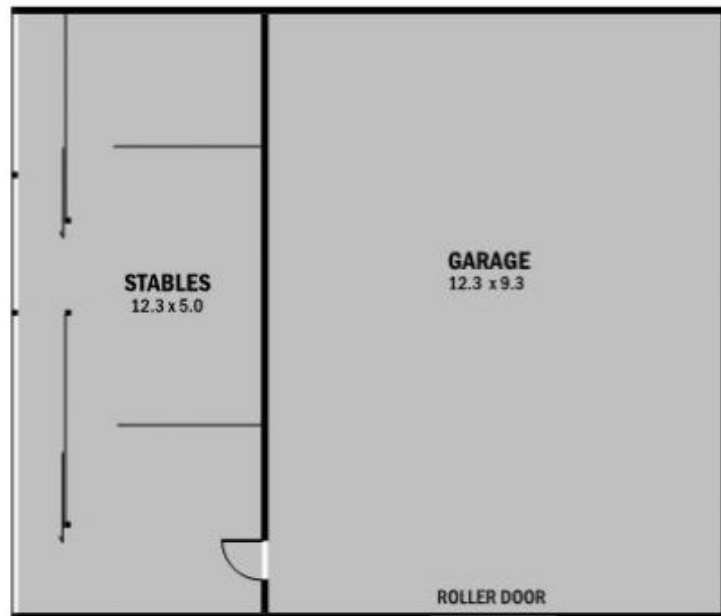
Jason Kennedy
03 5428 2544

10 BENSON RD, GISBORNE SOUTH



NOTE: OUTBUILDINGS NOT IN ACTUAL POSITION TO HOUSE

APPROX



APPROX. GROSS INTERNAL FLOOR AREA : 205.5 SQ M
EXTERNAL AREA INCLUDING ENTERTAINMENT AREA : 306 SQ M

DRAWING IS FOR ILLUSTRATION PURPOSES ONLY. NOT DRAWN TO SCALE. ALL MEASUREMENTS ARE APPROXIMATE ONLY. NEITHER THE VENDOR OR THE AGENT ARE RESPONSIBLE FOR ANY ERRORS OR OMISSIONS. IT IS UP TO THE PURCHASERS TO VERIFY ALL INFORMATION.