



**3/36 Stephen Street GISBORNE VIC**

2 1 1

An opportunity to discover central township living within easy walking distance to everything and offering idyllic privacy all at a budget price. Unit offers 2 bedrooms, split level kitchen/dining/living room, bathroom/laundry and shower room. Single garage and exceptional decked courtyard garden and a bank of solar panels complete the offering. First home buyers and investors will love the presentation, price and finish here.

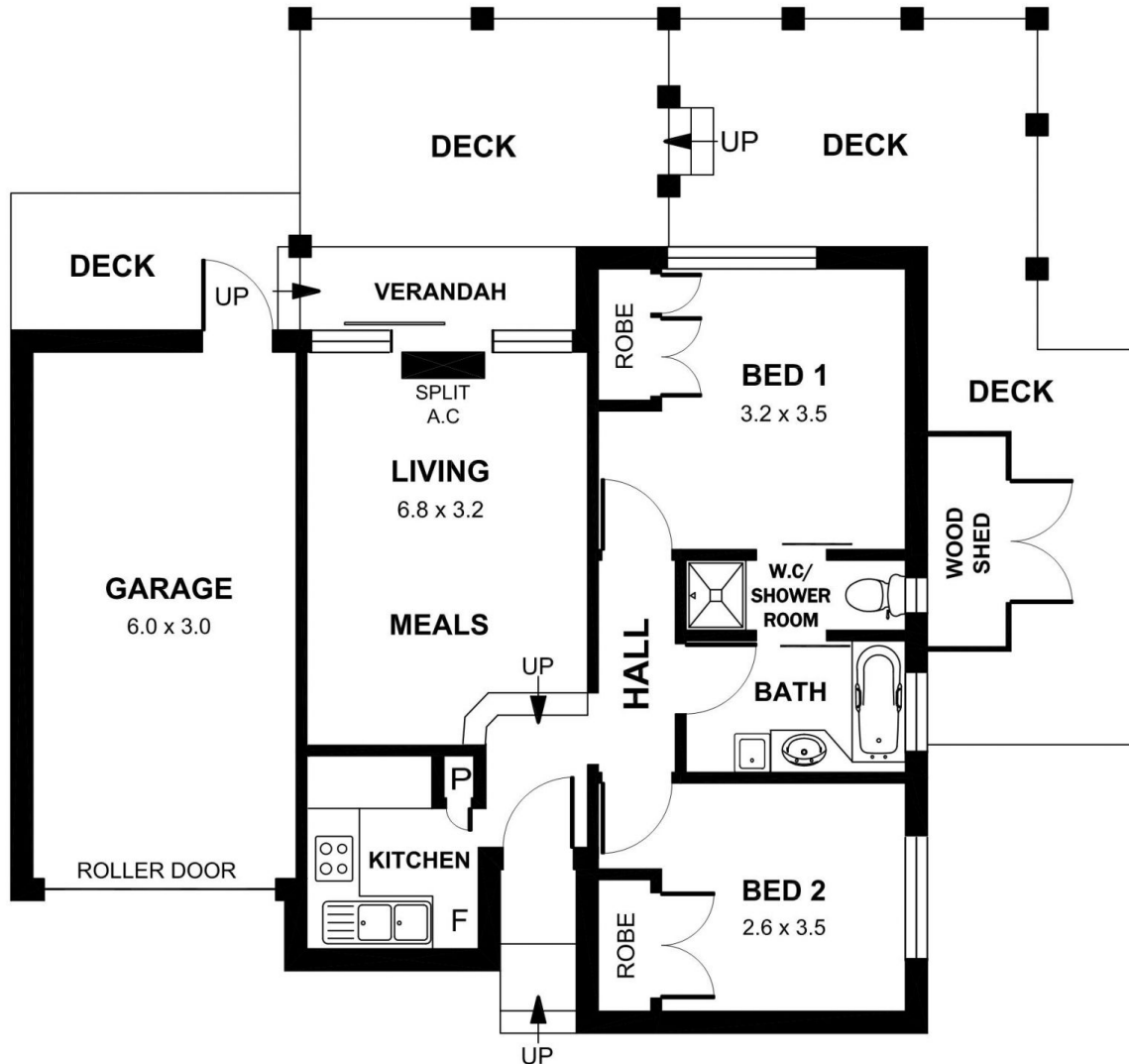
**View** : <https://www.kennedyandhunt.com.au/sale/vic/macedon-ranges/gisborne/residential/unit/5848972>

Property Code: 622



**Jason Kennedy**  
03 5428 2544

# UNIT 3/36 STEPHEN STREET, GISBORNE



APPROX. GROSS INTERNAL FLOOR AREA 743 SQ M  
 TOTAL AREA INCLUDING DECK AREAS 1195 SQM

DRAWING IS FOR ILLUSTRATION PURPOSES ONLY. NOT DRAWN TO SCALE. ALL MEASUREMENTS ARE APPROXIMATE ONLY.  
 NEITHER THE VENDOR OR THE AGENT ARE RESPONSIBLE FOR ANY ERRORS OR OMISSIONS.  
 IT IS UP TO THE PURCHASERS TO VERIFY ALL INFORMATION