



**16 Oakley Court GISBORNE VIC**

3 2 1

Discover living within easy walking distance to everything including schools and within an established neighbourhood. The home offers living on two levels with covered decking and carport . Inside provides a large open plan living/dining area updated smart kitchen all leading out onto the upper deck. Three bedrooms, semi ensuite and bathroom. Down stairs leads to a recreation room/billiard room and access to a further outdoor entertaining space, carport and the large garden. A brilliant start in the market or investment.

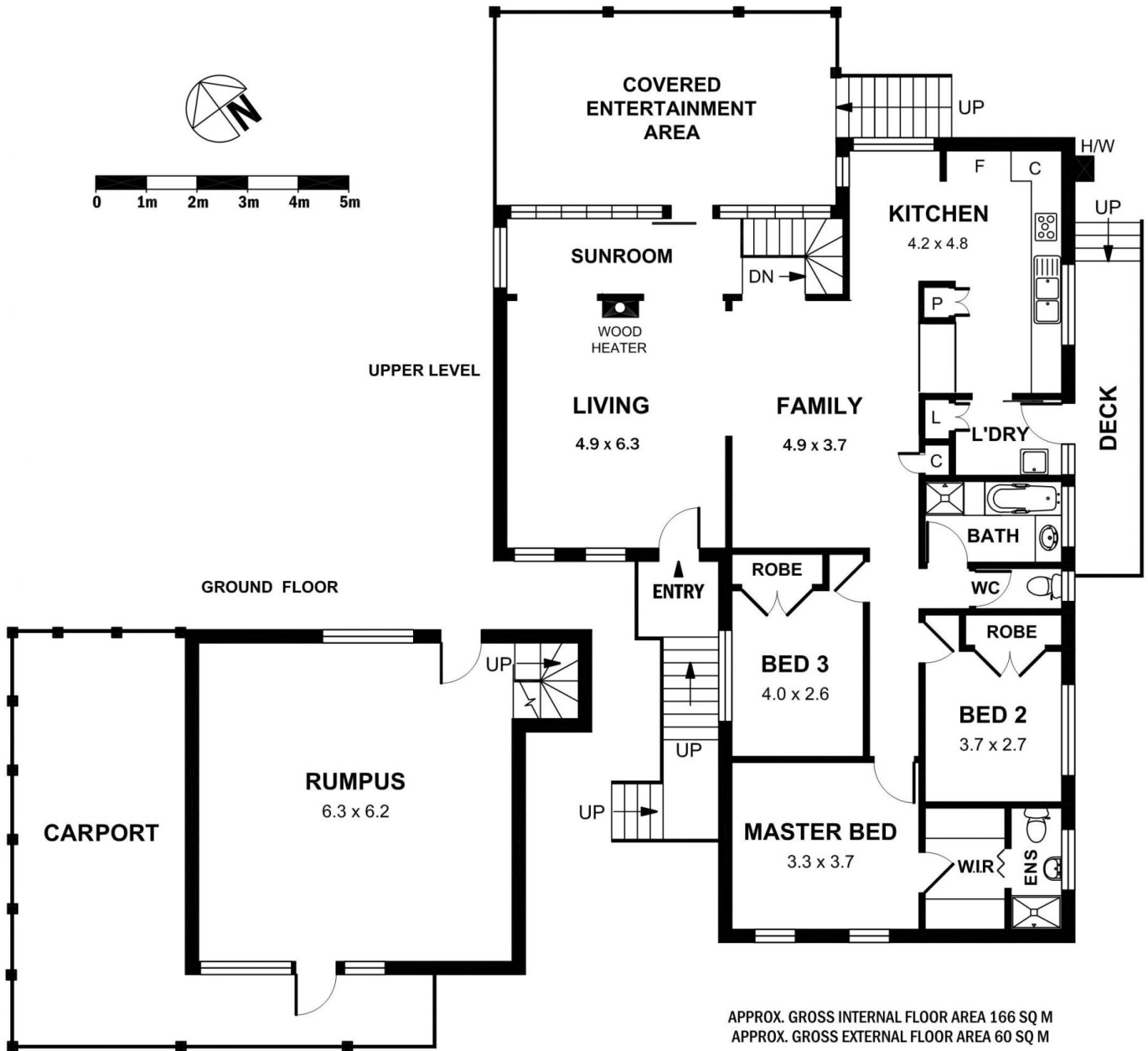
**Land Size** : 1030 sqm  
**View** : <https://www.kennedyandhunt.com.au/sale/vic/macedon-ranges/gisborne/residential/house/5848974>

Property Code: 625



**Jason Kennedy**  
03 5428 2544

# 16 OAKLEY COURT, GISBORNE



APPROX. GROSS INTERNAL FLOOR AREA 166 SQ M  
 APPROX. GROSS EXTERNAL FLOOR AREA 60 SQ M

DRAWING IS FOR ILLUSTRATION PURPOSES ONLY. NOT DRAWN TO SCALE. ALL MEASUREMENTS ARE APPROXIMATE ONLY.  
 NEITHER THE VENDOR OR THE AGENT ARE RESPONSIBLE FOR ANY ERRORS OR OMISSIONS.  
 IT IS UP TO THE PURCHASERS TO VERIFY ALL INFORMATION