

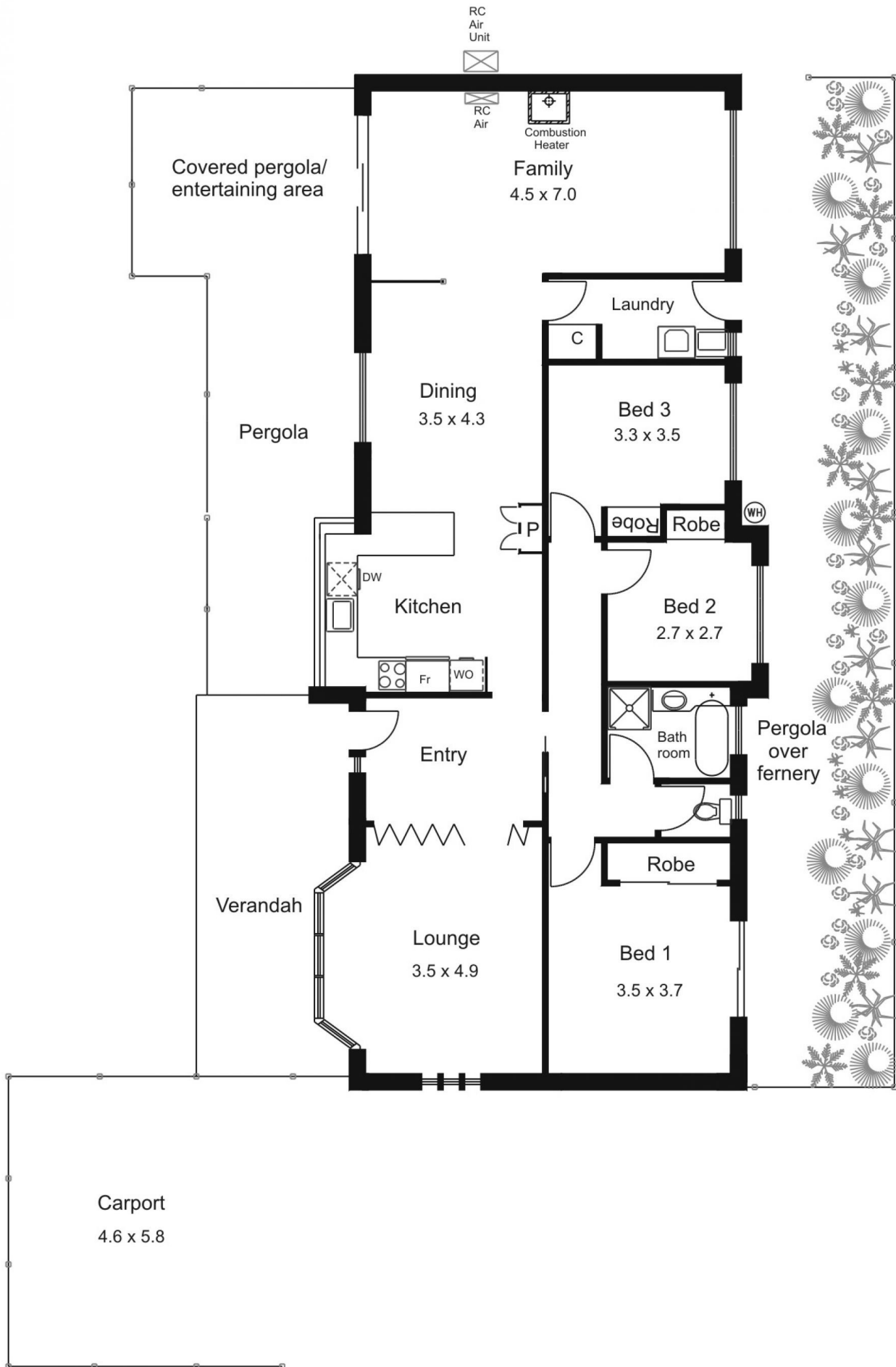


**18 Mountain View Way GISBORNE VIC**

3  1  2 

A little gem offering three bedrooms, two large and separate living areas, kitchen/meals, bathroom and laundry. Undercover outdoor entertaining space and generous double carport. Updated window furnishings, screens and carpets. Natural gas central heating, split system heating/cooling and slow combustion fire. Extensive paving. Private end of court position opposite parkland. Just move in and enjoy.

**Land Size** : 657 sqm  
**View** : <https://www.kennedyandhunt.com.au/sale/vic/macedon-ranges/gisborne/residential/house/5849047>



Drawing is for illustration purposes only.  
 All measurements are approximate only. Not drawn to scale.