

**7-13 Mulgutherie Way GISBORNE VIC**

4 🏠 3 🚗 2 🚘

Luxurious historic Gisborne homestead (Circa 1936) of brick and stone construction, superbly located on an elevated 8,078sqm (approx 2 acres) within walking distance to township.

This exquisite residence embraces the character and style of yesteryear, whilst showcasing modern day trimmings incorporating every possible luxury.

As you would expect from a renowned property of such status, the grand entrance hallway invites you through the home into the vast formal and informal living spaces. The chefs kitchen is lavishly appointed, with Ilve Fishburner / Deepfryer / Teppanyaki Grill, stone benches and splash backs, complimented by a butlers pantry.

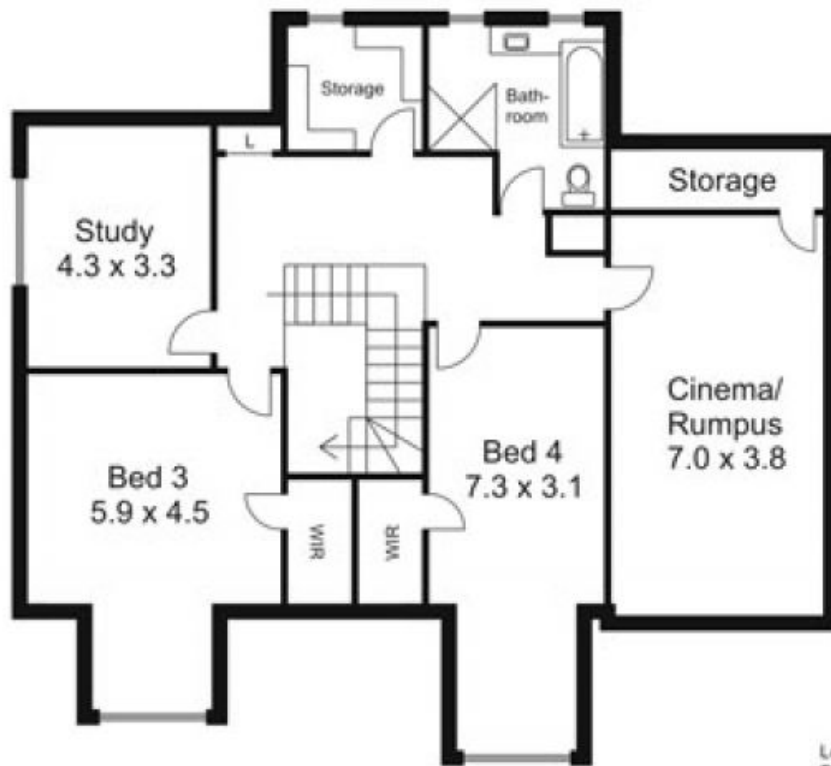
Magnificent master bedroom retreat to the front of the home, complete with immense ensuite, WIR, feature OFP and sunroom.

A further ensuite bedroom, laundry and storage areas

**Building Size** : 43 sqm  
**Land Size** : 8078 sqm  
**View** : <https://www.kennedyandhunt.com.au/sale/vic/macedon-ranges/gisborne/residential/house/5849059>



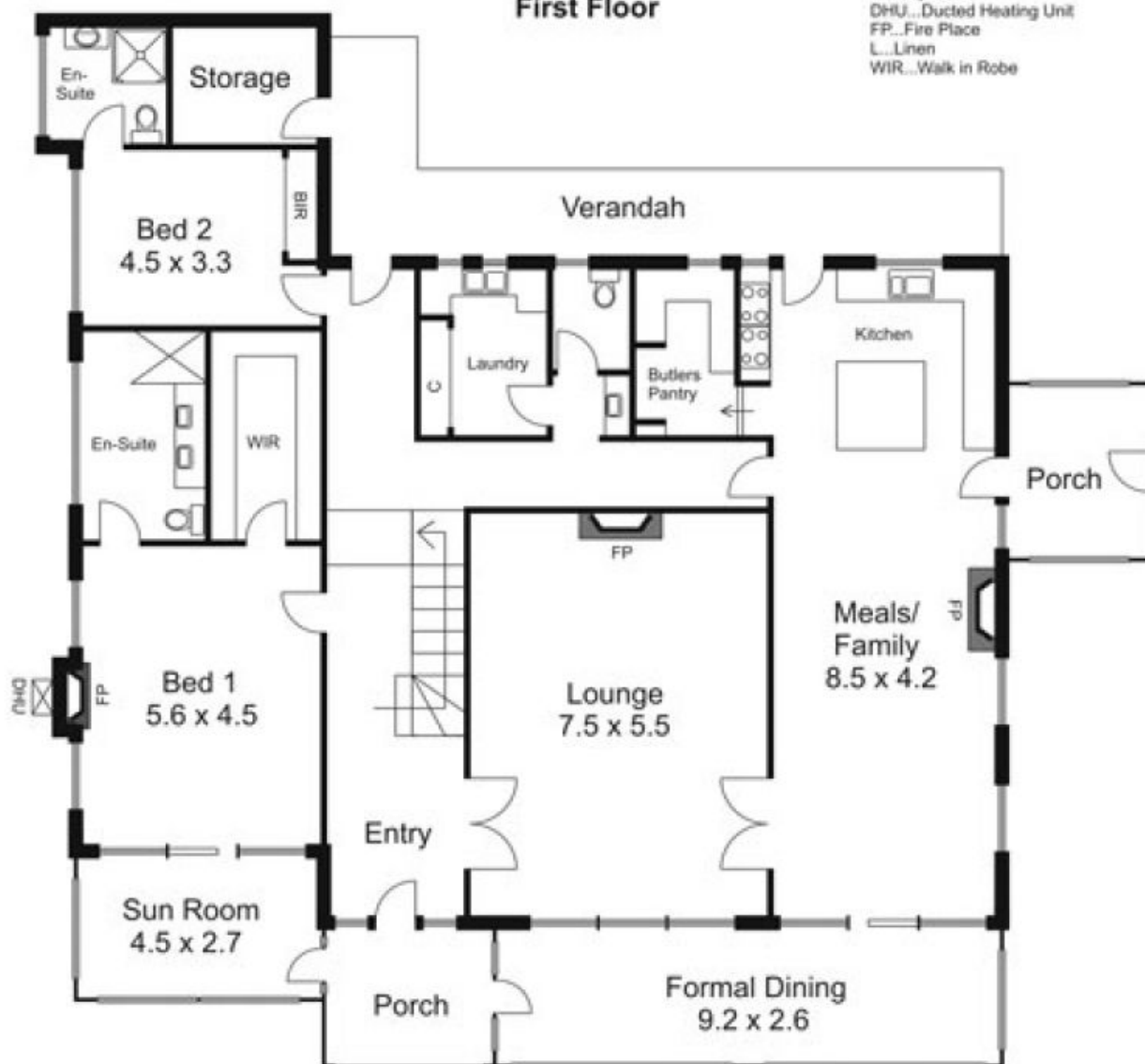
**Jason Kennedy**  
**03 5428 2544**



**First Floor**

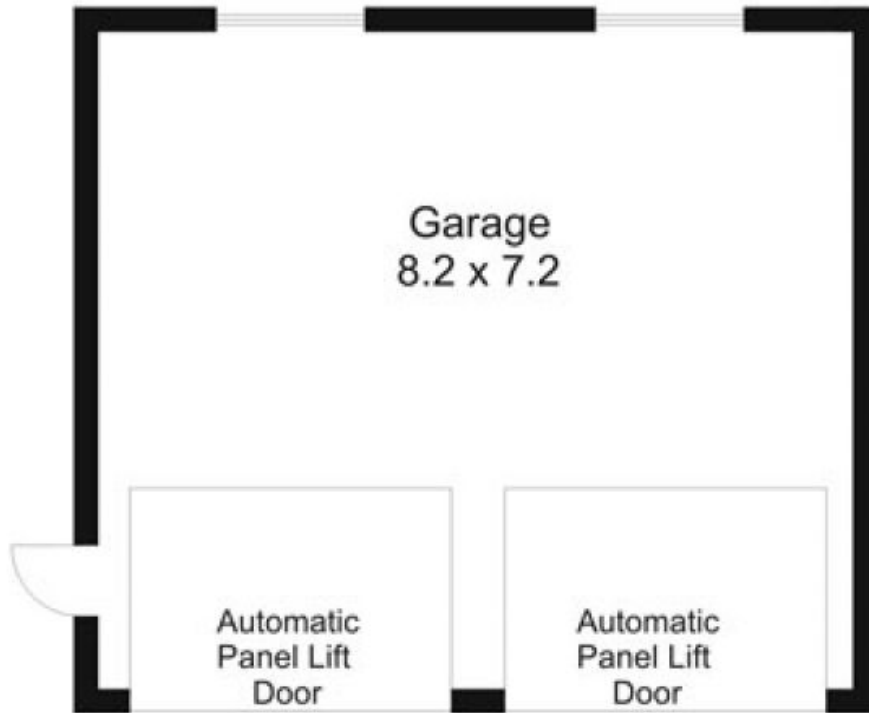


Legend:  
 BIR... Built in Robe  
 C... Cupboard  
 DHU... Ducted Heating Unit  
 FP... Fire Place  
 L... Linen  
 WIR... Walk in Robe

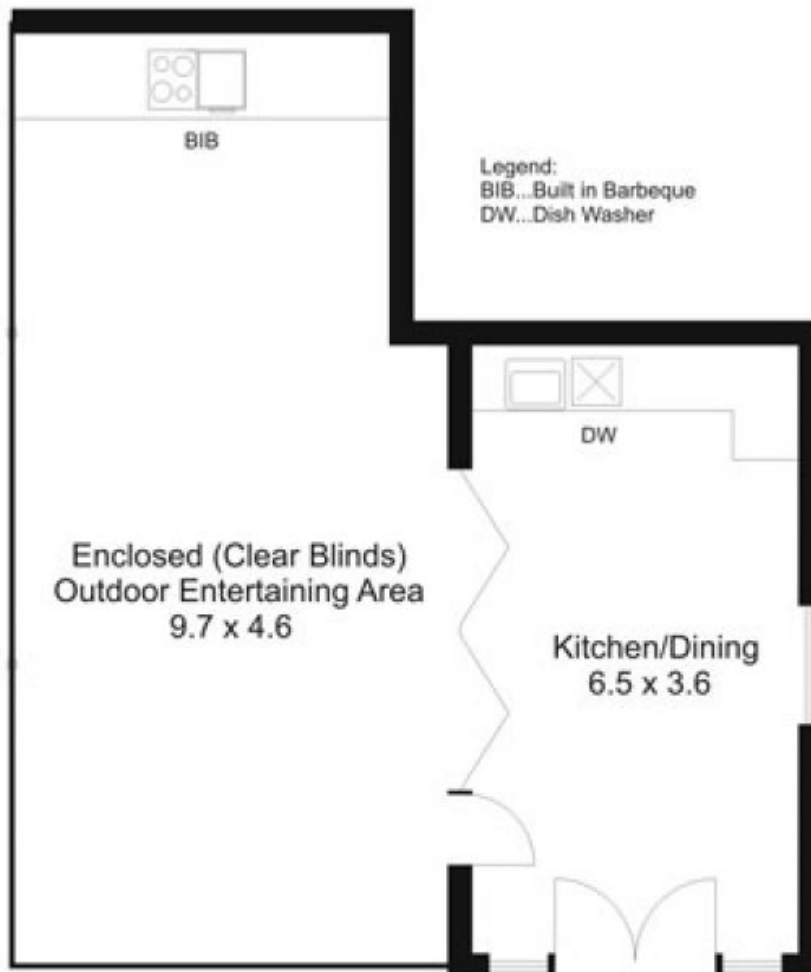


**Ground Floor**

*Drawing for illustration purposes only. Not drawn to scale. All measurements are approximate only.*



Note: Not in actual position



Note: Not in actual position

Drawing for illustration purposes only. Not drawn to scale. All measurements are approximate only.