

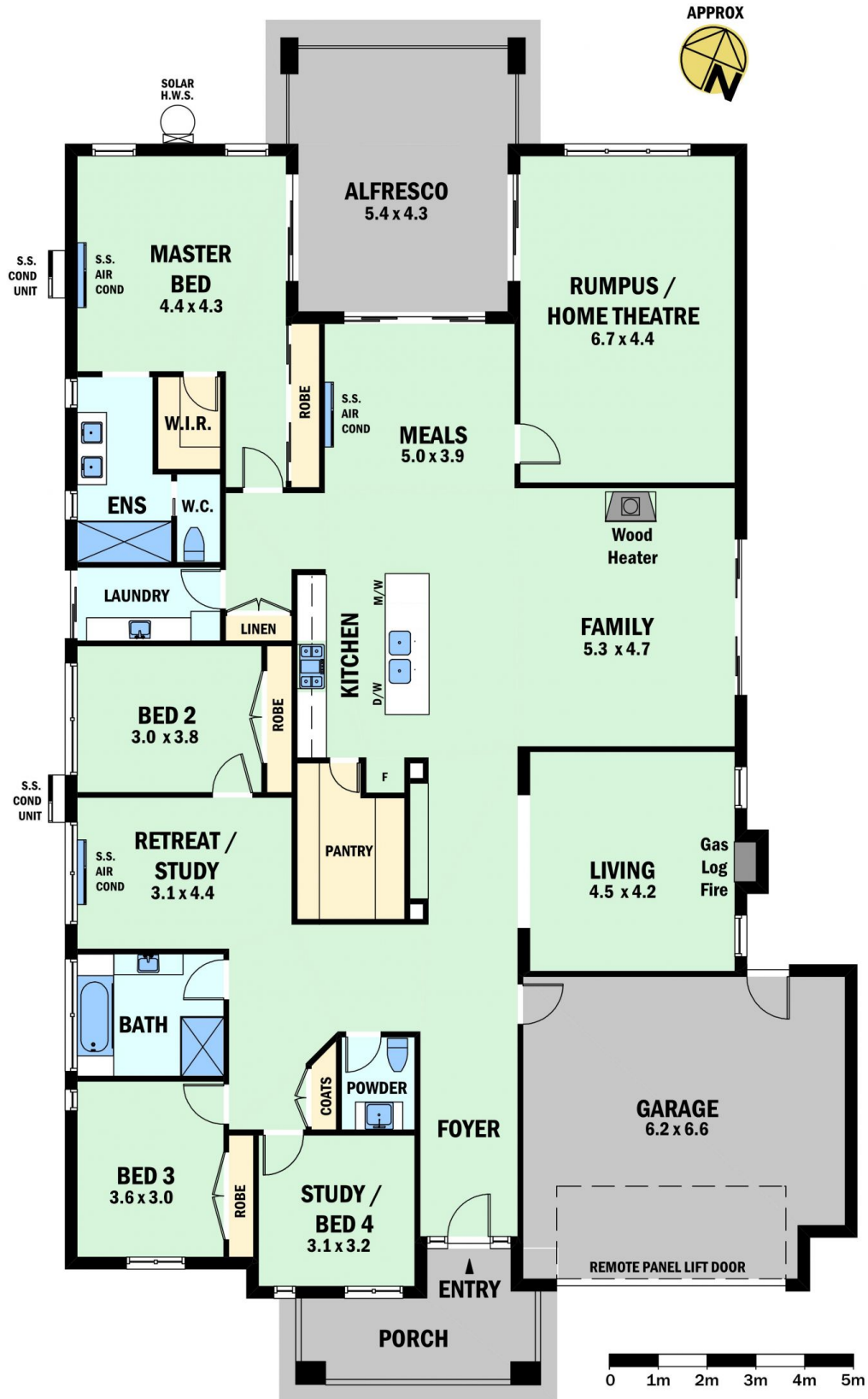
4 Kennington Rise GISBORNE VIC

4 2 2

Right on the fringe of town and at the end of a court, this property offers privacy and absolute comfort for the whole family. Four large bedrooms and study, family bathroom, powder room and ensuite all with sleek modern finish, three large and light living areas and kitchen with adjoining pantry are of the highest standard. The home offers every convenience and comfort with several heating/cooling options, double glazing, high ceilings and doors, under cover outdoor entertaining space, fully integrated double garage, sealed driveway and much more. Better than new all the hard work has been done and to a very high standard.

Price : \$ 725,000
Building Size : 28 sqm
Land Size : 2200 sqm
View : <https://www.kennedyandhunt.com.au/sale/vic/macedon-ranges/gisborne/residential/house/5849069>

4 KENNINGTON RISE GISBORNE



DRAWING IS FOR ILLUSTRATION PURPOSES ONLY. NOT DRAWN TO SCALE. ALL MEASUREMENTS ARE APPROXIMATE ONLY.
NEITHER THE VENDOR OR THE AGENT ARE RESPONSIBLE FOR ANY ERRORS OR OMISSIONS.
IT IS UP TO THE PURCHASERS TO VERIFY ALL INFORMATION.