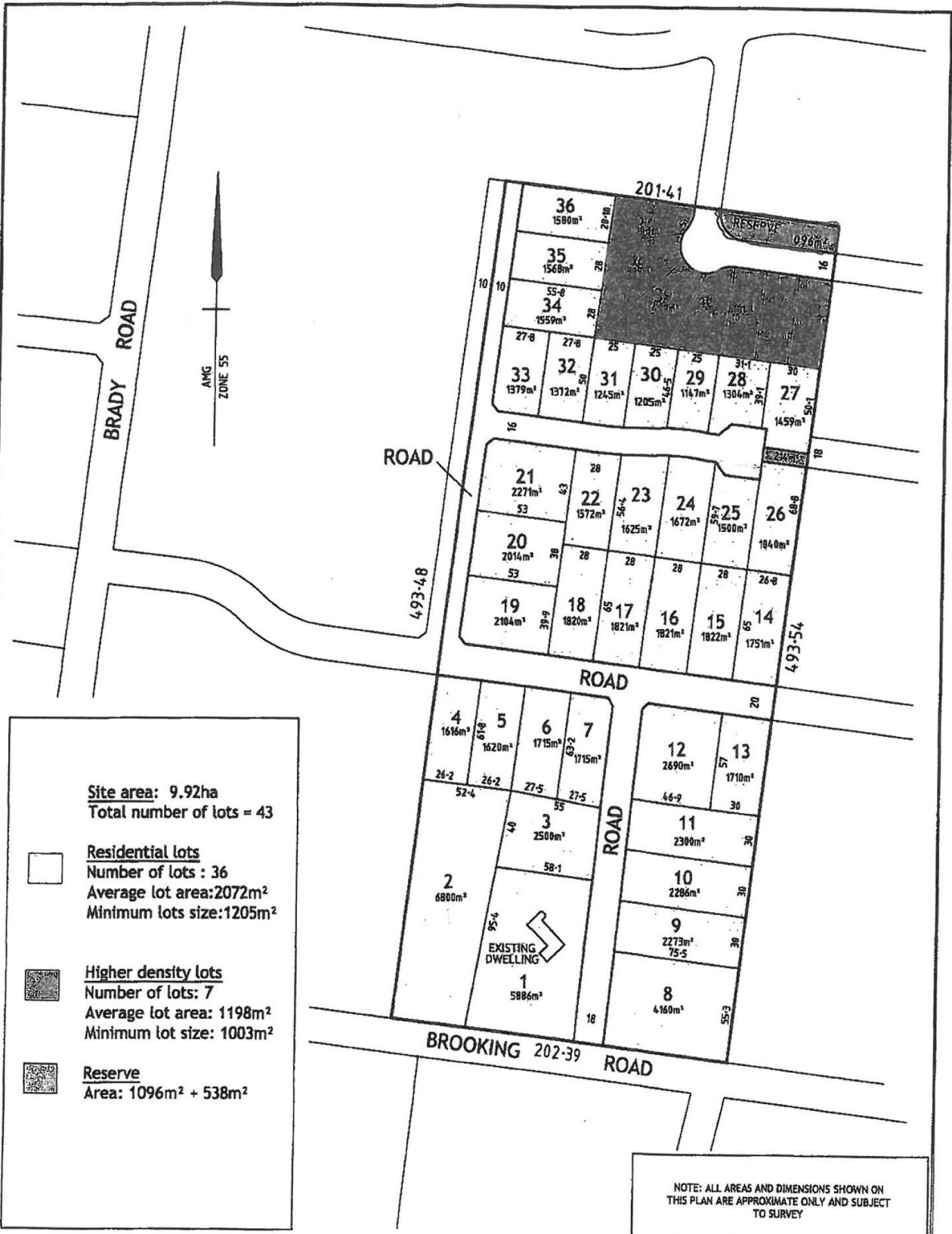




10 Kavanagh Court GISBORNE VIC

Located at the end of quiet court with views to Macedon Ranges.
Fenced 2 sides. Plenty of room for the active family and a healthy out door life

Land Size : 1500 sqm
View : <https://www.kennedyandhunt.com.au/sale/vic/macedon-ranges/gisborne/residential/land/5849163>



Site area: 9.92ha
Total number of lots = 43

Residential lots
 Number of lots : 36
 Average lot area: 2072m²
 Minimum lots size: 1205m²

Higher density lots
 Number of lots: 7
 Average lot area: 1198m²
 Minimum lot size: 1003m²

Reserve
 Area: 1096m² + 538m²

NOTE: ALL AREAS AND DIMENSIONS SHOWN ON THIS PLAN ARE APPROXIMATE ONLY AND SUBJECT TO SURVEY

Suite 3, 100 Dorcas Street, Southbank 3006
 Telephone (03) 9886 5488
 Facsimile (03) 9886 5477
 Tomkinson Pty. Ltd. ABN 30 005 217 491
 www.tomkinson.com.au

Tomkinson
 Complete Development Solutions
 Project Managers | Planners | Surveyors | Engineers

PLAN OF PROPOSED SUBDIVISION
BROOKING ROAD
 GISBORNE

SCALE 1:2000

SHEET 1 OF 1 SHEETS | A3

REF: MJ5141/DP3 | VERSION: G

HJ5141_DP_G.DWG | HB 27.9.08