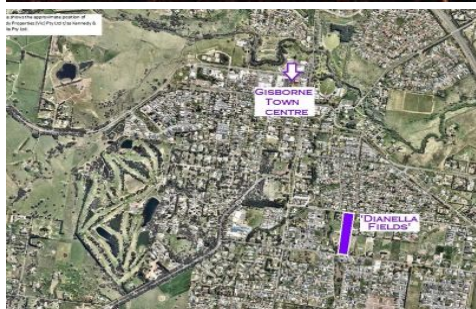


LOT NUMBER	SIZE M <sup>2</sup>	STATUS
1	572	SOLD
5	390	SOLD
6	772	SOLD
7	663	SOLD
8	700	SOLD
9	648	SOLD
10	568	SOLD
11	574	SOLD

ALL DRAWINGS AND MEASUREMENTS ARE APPROXIMATE AND SUBJECT TO CHANGE WITHOUT NOTICE



### Lot 10/ Dianella Fields GISBORNE VIC

Here is your chance to secure the last available allotment in stage 1 of this highly prestigious development.

Fantastic 568 sqm (approx) corner block, expected to title by September 2019.

This subdivision is situated at 134 Willowbank Road and 65 Fersfield Road, Gisborne we anticipate that the final allotment wont last long!

Only a 5% deposit is required to secure this allotment.

Property Code: 2216

**Price** : \$ 345,000  
**Land Size** : 568 sqm  
**View** : <https://www.kennedyandhunt.com.au/sale/vic/macedon-ranges/gisborne/residential/land/5849300>



**Jason Kennedy**  
03 5428 2544