

3 Mulgutherie Way Gisborne VIC

5 2 2

OPEN HOUSE CANCELLED

Step inside and be surprised by the spaces that are on offer!

- Sitting proudly on an elevated corner allotment with magical views to Mt Macedon.
- Entry from the expansive verandah, along lovely wide hybrid flooring.
- Large families will love the flexible 5 bedroom floorplan, or use as 4 plus study!
- Living areas include huge lounge & dining areas plus separate rumpus / theatre room.
- Immaculate new kitchen enjoying quality appliances, and a lovely outlook across the lush rear lawns and fenced, private yard.
- Complete with ducted heating & cooling, plus superb solar infrastructure.
- Located in Gisborne's premier estate, and only a short

Building Size : 266 sqm
Land Size : 1173 sqm
View : <https://www.kennedyandhunt.com.au/sale/vic/macedon-ranges/gisborne/residential/house/5849437>

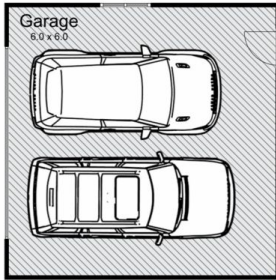
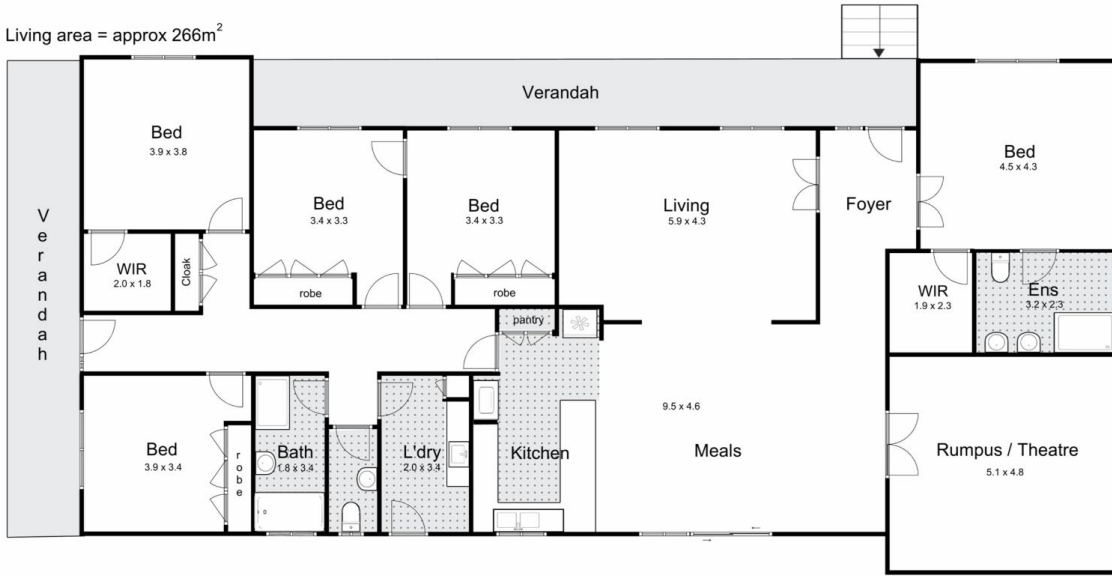


Jason Kennedy
03 5428 2544



Kirrily Evans
0439 964 991

Living area = approx 266m²



3 Mulgutherie Way, Gisborne



Whilst every attempt has been made to ensure the accuracy of the floor plan contained here, measurements of doors, windows, rooms and any other items are approximate and no responsibility is taken for any error, omission, or mis-statement. This plan is for illustrative purposes only and should be used as such by any prospective purchaser. The services, systems and appliances shown have not been tested and no guarantee as to their operability or efficiency can be given.