



24 Vancleve Crescent Gisborne VIC

4 2 2

VIEWING OF THIS PROPERTY IS AVAILABLE BY APPOINTMENT. PLEASE CONTACT JASON ON 0417 383 235 TO BOOK A TIME.

The quality build of this contemporary family home is immediately evident; combining a well designed floorplan, with superb indoor/outdoor flow.

The bright entrance leads past a sunny lounge room and private master suite.

The generous master suite boasts exceptional storage and spacious ensuite with separate WC.

The wide hallway continues past a dedicated study / home office space - ideal for those working from home. This room is also well located to be purposed as a kids retreat / nursery.

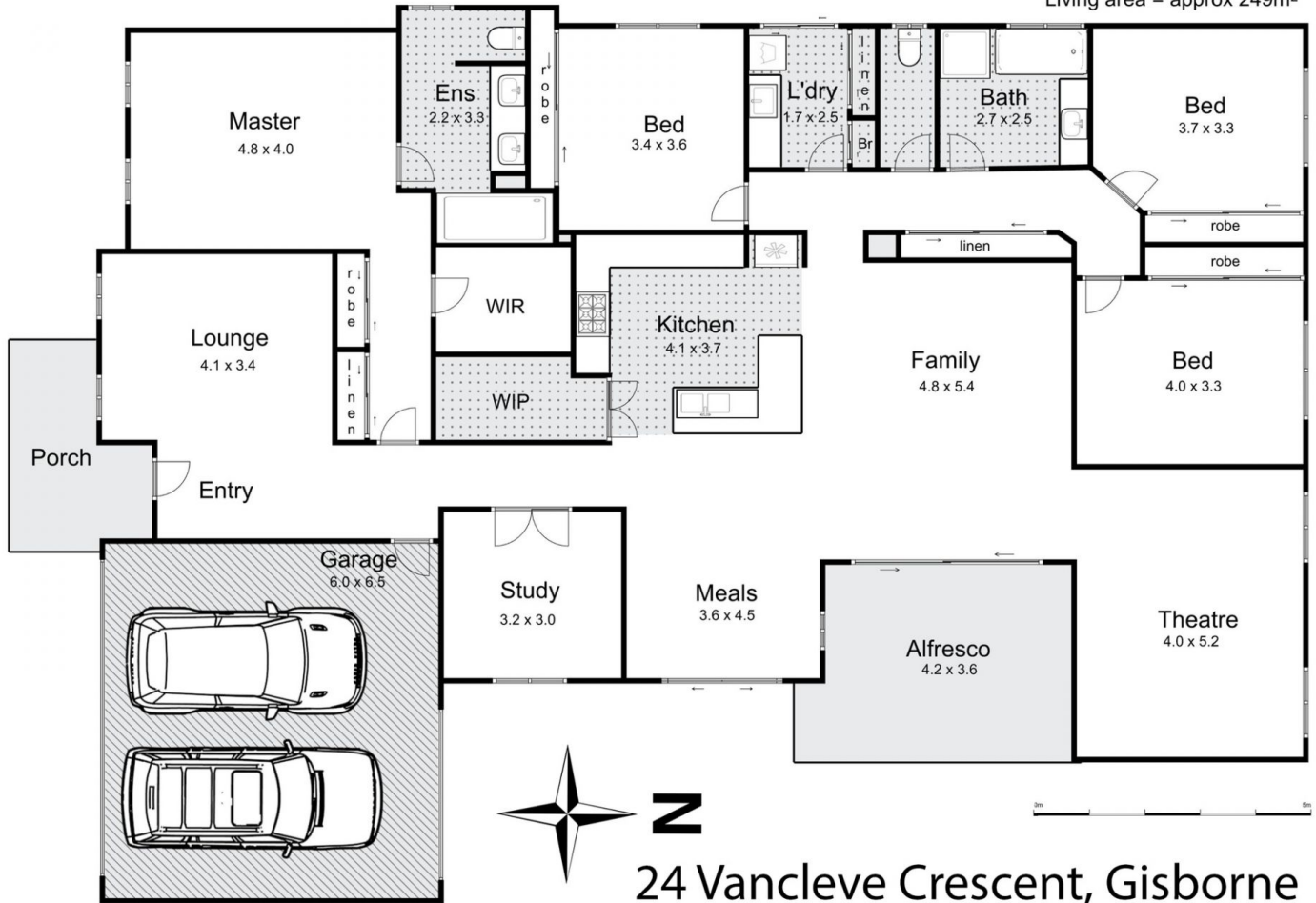
From here, you will find the large central kitchen. Complete

Price : \$ 875,000
Building Size : 249 sqm
Land Size : 725 sqm
View : <https://www.kennedyandhunt.com.au/sale/vic/macedon-ranges/gisborne/residential/house/6001240>



Jason Kennedy
03 5428 2544

Living area = approx 249m²



24 Vancleve Crescent, Gisborne

every attempt has been made to ensure the accuracy of the floor plan contained here, measurements of doors, windows, rooms and any other items are approximate and no responsibility is taken for any error, omission, or mis-statement. an is for illustrative purposes only and should be used as such by any prospective purchaser. The services, systems and appliances shown have not been tested and no guarantee as to their operability or efficiency can be given.

