



**4 William Court Gisborne VIC**

4 2 2

With a wide entry foyer and light filled kitchen / meals area to the front of the home.

The kitchen includes butler's pantry and s/steel appliances.

Huge lounge, complete with gas log fire.

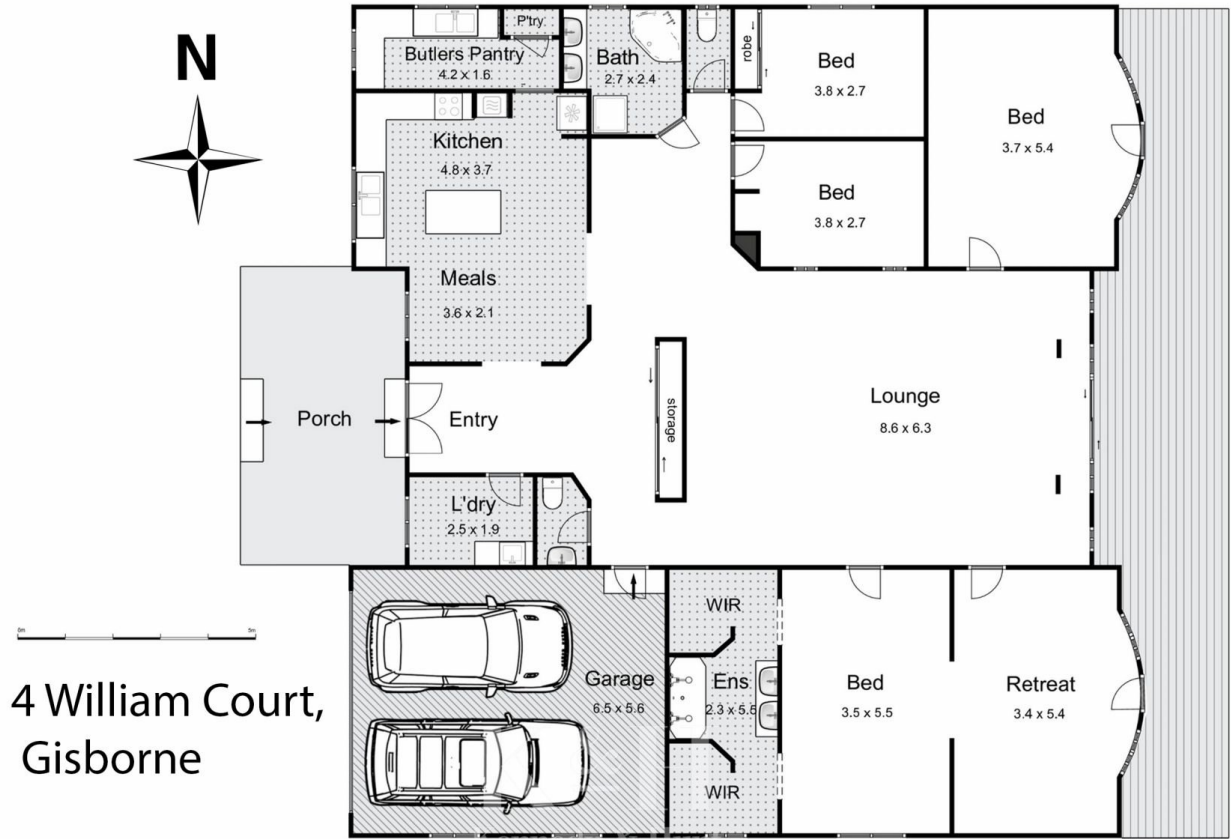
Main bedroom, complete with an adjoining retreat, which opens to the partially covered alfresco. The main suite also includes dual walk-in robes and ensuite.

There are 3 further bedrooms - one with external access; a family bathroom with spa, plus a powder room.

With ducted heating, reverse cycle air conditioning, double glazed windows, a fenced private yard and side access.

**View** : <https://www.kennedyandhunt.com.au/lease/vic/macedon-ranges/gisborne/residential/house/7748221>

Living area = approx 236m<sup>2</sup>



4 William Court,  
Gisborne

Whilst every attempt has been made to ensure the accuracy of the floor plan contained here, measurements of doors, windows, rooms and any other items are approximate and no responsibility is taken for any error, omission, or mis-statement. This plan is for illustrative purposes only and should be used as such by any prospective purchaser. The services, systems and appliances shown have not been tested and no guarantee as to their operability or efficiency can be given.