



### 3 Lomandra Drive Gisborne VIC

6 3 3

Don't let first impressions deceive you, nestled on a generous 1,260m<sup>2</sup> (approx.) allotment, this inviting Hebel home is much larger than it looks.

Thoughtfully designed for comfortable living, Hebel homes boast superb thermal properties - ensuring year round comfort. This well considered North facing dwelling also has double glazing, to further add to the appeal. There is very little need for additional heating or cooling.

Hebel promises excellent acoustic performance, and lower energy costs; not to mention it being an environmentally friendly product.

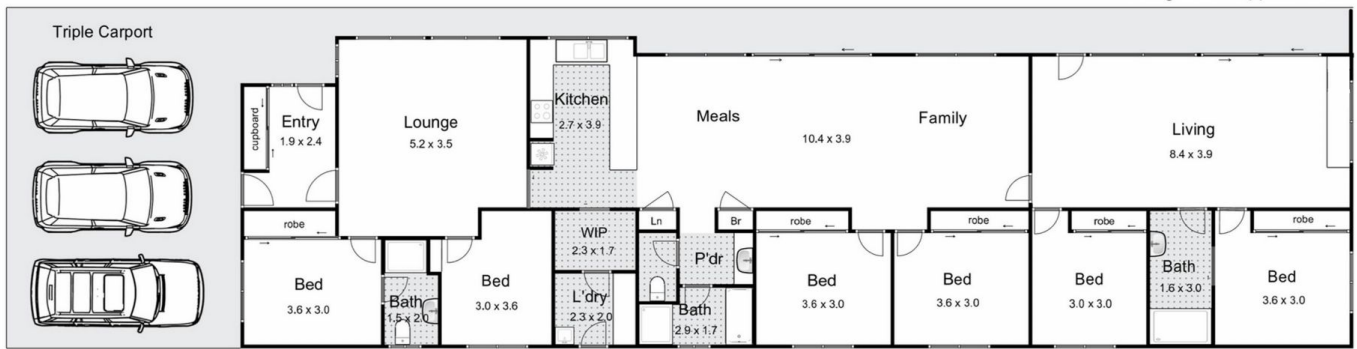
Offering 5 bedrooms plus a study / 6th bedroom if required, there are just so many options here. The flexible floorplan offers multiple living spaces, with the potential for

**Price** : \$895,000  
**Building Size** : 243 sqm  
**Land Size** : 1260 sqm  
**View** : <https://www.kennedyandhunt.com.au/sale/vic/macedon-ranges/gisborne/residential/house/7811710>

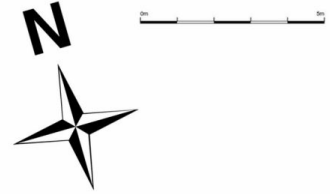


**Jason Kennedy**  
03 5428 2544

Living area = approx 243m<sup>2</sup>



3 Lomandra Drive, Gisborne



K & H  
Kennedy & Hunt

Whilst every attempt has been made to ensure the accuracy of the floor plan contained here, measurements of doors, windows, rooms and any other items are approximate and no responsibility is taken for any error, omission, or mis-statement. This plan is for illustrative purposes only and should be used as such by any prospective purchaser. The services, systems and appliances shown have not been tested and no guarantee as to their operability or efficiency can be given.

open2view.com.au