

## 2 Coleman Court New Gisborne VIC

3 2 2

Nestled in a quiet court location within the highly sought-after Saunders Rise Estate, 2 Coleman Court masterfully blends style, functionality, and space.

The thoughtfully designed layout ensures the open-plan living areas are perfectly positioned to capture delightful views of the spacious and inviting rear gardens.

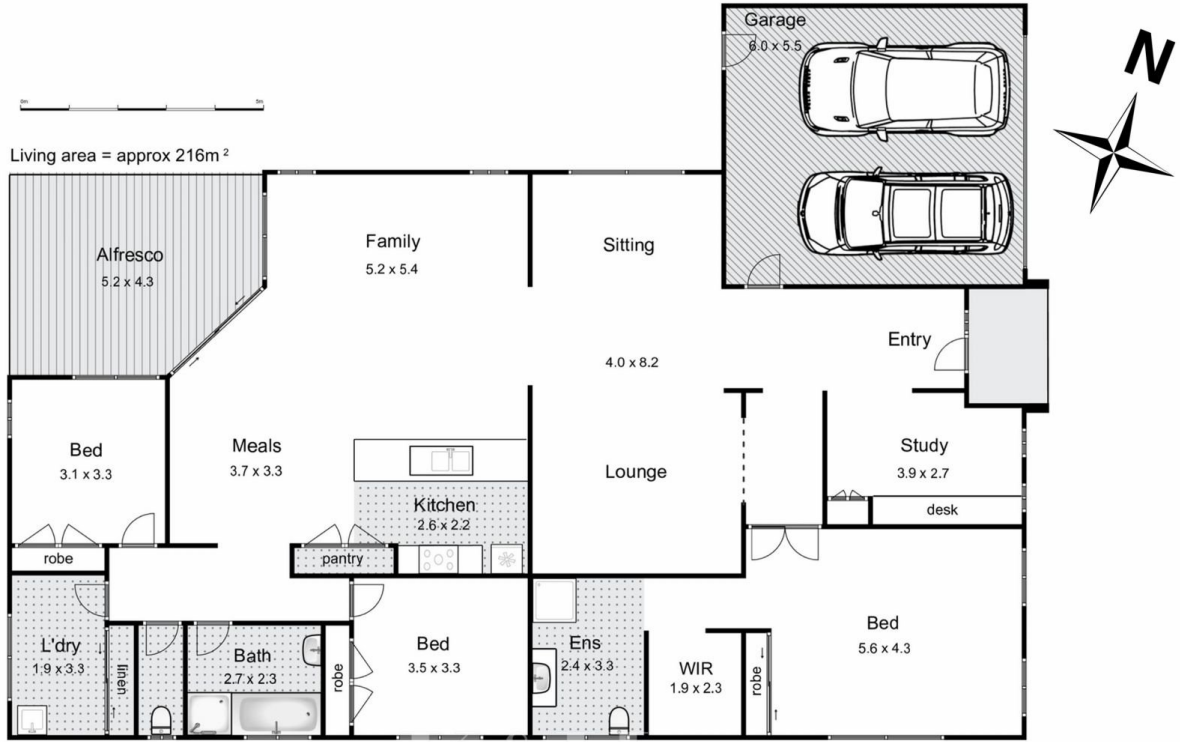
The well-designed galley-style kitchen flows seamlessly into the family and meals areas, overlooking the charming decked alfresco, making it perfect for entertaining.

The immense main bedroom suite, privately positioned at the front of the home, offers a tranquil retreat, that includes BIRs, a spacious WIR, and a deluxe ensuite. Two additional bedrooms are complete with BIRs.

**Price** : \$975,000  
**Building Size** : 216 sqm  
**Land Size** : 774 sqm  
**View** : <https://www.kennedyandhunt.com.au/sale/vic/macedon-ranges/new-gisborne/residential/house/8089939>



**Jason Kennedy**  
03 5428 2544



## 2 Coleman Court, New Gisborne

Whilst every attempt has been made to ensure the accuracy of the floor plan contained here, measurements of doors, windows, rooms and any other items are approximate and no responsibility is taken for any error, omission, or mis-statement. This plan is for illustrative purposes only and should be used as such by any prospective purchaser. The services, systems and appliances shown have not been tested and no guarantee as to their operability or efficiency can be given.