



**88 Sheedy Road Gisborne VIC**

3 2 2

This outstanding property is located only 1.5km (approx.) from the heart of Gisborne, on a leafy service road.

Enjoying a wide street frontage of approx. 37.8m, the north-facing residence offers plenty of kerbside appeal.

The location, and allotment size of approx. 1,046m<sup>2</sup> hosts unlimited potential for those looking for an opportunity to reinvigorate, repurpose, renovate or redevelop (STCA).

Offering charm and character throughout, thanks to slate floors and colonial timber windows, this 3 bedroom, 2 bathroom residence presents much scope and potential for improvement and / or updating.

The residence includes:  
- Light filled family lounge room with a delightful outlook

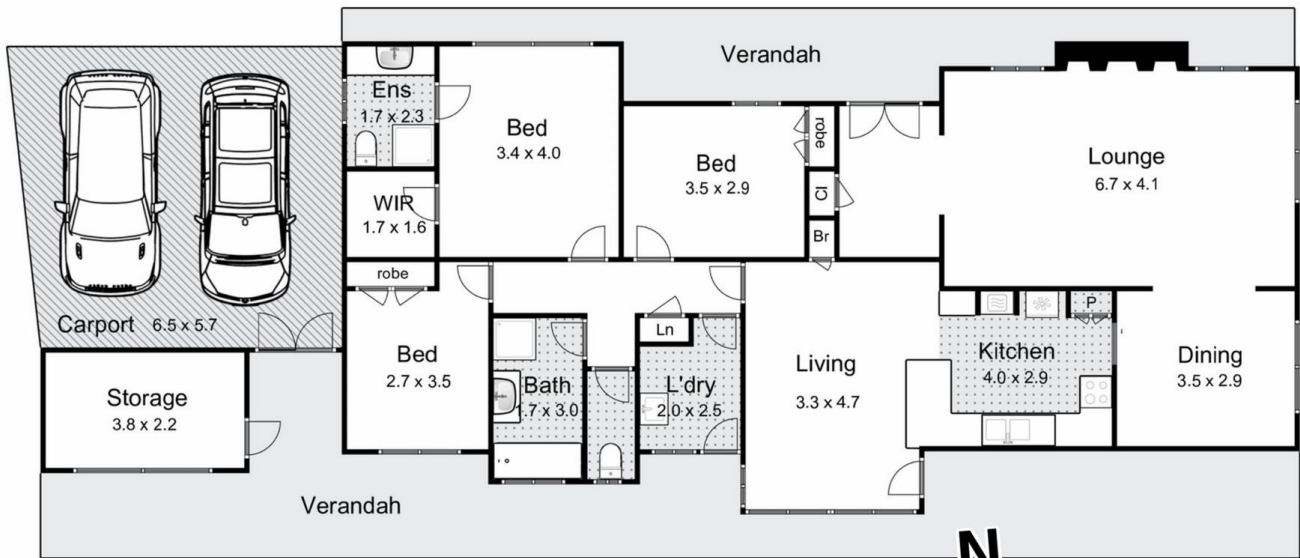
**Price** : \$720,000 - \$740,000  
**Land Size** : 1046 sqm  
**View** : <https://www.kennedyandhunt.com.au/sale/vic/macedon-ranges/gisborne/residential/house/8113052>



**Jason Kennedy**  
03 5428 2544

# 88 Sheedy Road, Gisborne

Living area = approx 137m<sup>2</sup>



K & H  
Kennedy & Hunt

Whilst every attempt has been made to ensure the accuracy of the floor plan contained here, measurements of doors, windows, rooms and any other items are approximate and no responsibility is taken for any error, omission, or mis-statement. This plan is for illustrative purposes only and should be used as such by any prospective purchaser. The services, systems and appliances shown have not been tested and no guarantee as to their operability or efficiency can be given.

open2view.com.au